



Simply Better Connections

UC9040

StreamLIVE™ PRO  
Multi-Channel AV Mixer  
User Manual

## Compliance Statements

---

### FEDERAL COMMUNICATIONS COMMISSION INTERFERENCE STATEMENT

This equipment has been tested and found to comply with the limits for a Class A digital device, pursuant to Part 15 of the FCC Rules. These limits are designed to provide reasonable protection against harmful interference when the equipment is operated in a commercial environment. This equipment generates, uses, and can radiate radio frequency energy and, if not installed and used in accordance with the instruction manual, may cause harmful interference to radio communications. Operation of this equipment in a residential area is likely to cause harmful interference in which case the user will be required to correct the interference at his own expense.

The device complies with Part 15 of the FCC Rules. Operation is subject to the following two conditions: (1) this device may not cause harmful interference, and (2) this device must accept any interference received, including interference that may cause undesired operation.

### FCC Caution

Any changes or modifications not expressly approved by the party responsible for compliance could void the user's authority to operate this equipment.

### Warning

Operation of this equipment in a residential environment could cause radio interference.

### Achtung

Der Gebrauch dieses Geräts in Wohnumgebung kann Funkstörungen verursachen.



### KCC Statement

유선 제품용 / A 급 기기 (업무용 방송 통신 기기)  
이 기기는 업무용 (A 급) 전자파적합기기로서 판매자 또는 사용자는 이  
점을 주의하시기 바라며, 가정 외의 지역에서 사용하는 것을 목적으로  
합니다.

### **HDMI Trademark Statement**

The terms HDMI, HDMI High-Definition Multimedia Interface, and the HDMI Logo are trademarks or registered trademarks of HDMI Licensing Administrator, Inc.



### **PSE**

This product is PSE compliant.



### **RoHS**

This product is RoHS compliant.

## User Information

---

### Online Registration

Be sure to register your product at our online support center:

International	<a href="http://eservice.aten.com">http://eservice.aten.com</a>
---------------	---

---

### Telephone Support

For telephone support, call this number:

International	886-2-8692-6959
China	86-400-810-0-810
Japan	81-3-5615-5811
Korea	82-2-467-6789
North America	1-888-999-ATEN ext 4988 1-949-428-1111

---

### User Notice

All information, documentation, and specifications contained in this manual are subject to change without prior notification by the manufacturer. The manufacturer makes no representations or warranties, either expressed or implied, with respect to the contents hereof and specifically disclaims any warranties as to merchantability or fitness for any particular purpose. Any of the manufacturer's software described in this manual is sold or licensed *as is*. Should the programs prove defective following their purchase, the buyer (and not the manufacturer, its distributor, or its dealer), assumes the entire cost of all necessary servicing, repair and any incidental or consequential damages resulting from any defect in the software.

The manufacturer of this system is not responsible for any radio and/or TV interference caused by unauthorized modifications to this device. It is the responsibility of the user to correct such interference.

The manufacturer is not responsible for any damage incurred in the operation of this system if the correct operational voltage setting was not selected prior to operation. PLEASE VERIFY THAT THE VOLTAGE SETTING IS CORRECT BEFORE USE.



## Product Information

---

For information about all ATEN products and how they can help you connect without limits, visit ATEN on the Web or contact an ATEN Authorized Reseller. Visit ATEN on the Web for a list of locations and telephone numbers:

International	<a href="http://www.aten.com">http://www.aten.com</a>
North America	<a href="http://www.aten-usa.com">http://www.aten-usa.com</a>

## Package Contents

---

Check to make sure that all the components are in working order. If you encounter any problem, please contact your dealer.

- 1 UC9040 StreamLIVE™ PRO Multi-Channel AV Mixer
- 1 USB Type-C to USB Type-C cable
- 1 USB Type-C to USB Type-A cable
- 1 power adapter
- 1 user instructions

# Table of Contents

---

Compliance Statements .....	ii
User Information .....	iv
Online Registration .....	iv
Telephone Support .....	iv
User Notice .....	iv
Product Information .....	v
Package Contents .....	vi
Table of Contents .....	vii
About this Manual .....	x
Conventions .....	xi

## 1. Introduction

Overview .....	1
Features .....	3
Requirements .....	4
Components .....	5
Top View .....	5
Rear View .....	8
Side View .....	9

## 2. Hardware Setup

Connecting the StreamLIVE™ PRO Unit .....	11
Connecting iPad .....	14
iPad with Lightning Connector .....	14
iPad with USB-C Connector .....	14
Pairing an Android Tablet or Chromebook via Network .....	15
Connecting Chromebook .....	16
Using the OnAir Cam App .....	17
Supported Systems .....	17
Installing the ATEN OnAir Lite App .....	17
Connecting the iOS Mobile Device .....	18

## 3. ATEN OnAir PRO App & Side Menu

ATEN OnAir PRO Application .....	19
Page Components .....	21
Side Menu .....	22
Current Project .....	23
Create Project .....	24
Copy as New Project .....	25
Open Project .....	26
Import Project .....	27
Export Project .....	28
All Projects .....	29

Tutorial .....	30
About .....	31
Reset the Device .....	32
Self-Diagnostic .....	33

## **4. ATEN OnAir PRO App & Video Mixer**

Video Mixer .....	35
Transition Control .....	37
Transition Control when the Quick Mode is Disabled .....	38
Transition Control when the Quick Mode is Enabled .....	38
Scene Editor .....	39
Resize/Crop Tool .....	42
Resize .....	42
Crop (Media Only) .....	43
Add/Edit Text Overlay .....	44
Re-order the Overlays .....	45

## **5. ATEN OnAir PRO App & Audio Mixer**

Audio Mixer .....	47
-------------------	----

## **6. ATEN OnAir PRO App & Settings**

Settings .....	51
General .....	52
Stream .....	54
Output .....	56
Reset Settings .....	58
Example Live-stream URL and Stream Key (Facebook) .....	59
Example Live-stream URL and Stream Key (YouTube) .....	59
Recording Live-stream Video (External Storage) .....	60
External Storage Settings .....	60
Video Information for Live-stream Recording .....	64

## **7. Quick Live-Stream Setup**

Setup .....	65
During the Live-Stream / Live-Stream Recording .....	69

## **8. Firmware Upgrade**

Download Requirements .....	71
Preparing the Firmware .....	71
Upgrading the Unit .....	73
Upgrade Assessment Fail .....	74
Upgrade Fail .....	75

## **Appendix**

Safety Instructions .....	77
---------------------------	----

General .....	77
Technical Support .....	79
International .....	79
North America .....	79
Supported List of Android Tablets .....	80
Specifications .....	89
Live-Streaming Information .....	91
Create a Live Stream with YouTube .....	91
What is CDN Service? .....	91
RTMP/RTMPS and RTSP Protocols .....	91
Other ways to input image overlays .....	92
Limited Warranty .....	92

## About this Manual

---

This manual is provided to help you get the most from the UC9040 unit. It covers all aspects of the device, including installation, configuration, and operation. An overview of the information covered is provided below.

**Chapter 1, Introduction** introduces you to the Multi-Channel AV Mixer, with its purpose, features, installation considerations, and panel components presented and described.

**Chapter 2, Hardware Setup** describes the steps that are necessary to quickly and safely set up your Multi-Channel AV Mixer.

**Chapter 3, ATEN OnAir PRO App & Side Menu** explains the functions of the OnAir app and its side menu.

**Chapter 4, ATEN OnAir PRO App & Video Mixer** explains the functions in the Video Mixer deck of the OnAir app, including scene editing, media resizing/cropping, and text and image overlays.

**Chapter 5, ATEN OnAir PRO App & Audio Mixer** explains the functions in the Audio Mixer deck of the OnAir app.

**Chapter 6, ATEN OnAir PRO App & Settings** explains the settings you can configure for the interactions between the unit and the OnAir app.

**Chapter 7, Quick Live-Stream Setup** describes how to quickly set up your system to help you start live-streaming.

**Chapter 8, Firmware Upgrade** describes the firmware upgrade procedures and how the volume mixer LED behaves during the firmware upgrade.

*Appendix* provides a list of safety instructions and precautions, ATEN technical support information, product specifications, and other technical information.


---

### Note:

- ♦ Read this manual thoroughly and follow the installation and operation procedures carefully to prevent any damage to the unit or connected devices.
  - ♦ The product may be updated, with features and functions added, improved or removed since the release of this manual. For an up-to-date user manual, visit <http://www.aten.com/global/en/>
-

## **Conventions**

This manual uses the following conventions:

- |   |  |
|---|--|
| <code>Monospaced</code>   | Indicates text that you should key in.   |
| [ ]   | Indicates keys you should press. For example, [Enter] means to press the <b>Enter</b> key. If keys need to be chorded, they appear together in the same bracket with a plus sign between them: [Ctrl+Alt]. |
| 1.  | Numbered lists represent procedures with sequential steps.   |
| ◆   | Bullet lists provide information, but do not involve sequential steps.   |
| >   | Indicates selecting consecutive options (such as on a menu or dialog box). For example, Start > Run means to open the <i>Start</i> menu, and then select <i>Run</i> .                                      |
|  | Indicates critical information.  |

This Page Intentionally Left Blank



# Chapter 1

## Introduction

### Overview

---

The StreamLIVE™ PRO is a portable, all-in-one, multi-channel audio / video mixer device that integrates an 1080p video capture, video recorder, video switch, stream broadcaster, video converter, 4K video splitter, and audio mixer into one compact box to eliminate the hassle of working with different AV equipment. The StreamLIVE™ PRO makes HDMI video sources broadcast for higher quality live stream to CDN platforms such as YouTube Live, Facebook, and Twitch.

For added convenience, the StreamLIVE™ PRO features an intuitive app OnAir, which is designed for use with supported Android / Windows devices or iPads, making it easy to monitor, edit image layouts, and DVE, PiP, or PbP settings. There are eight stunning DVE transitions, including circle drop, window slice, polka dot, circle open, fade, heart, cross hatch, and random square.

The StreamLIVE™ PRO is PC and software-free, and with its well-designed control panel, it makes livestreaming operations smooth and effortless. Users can even preview video and monitor audio levels before going live with their web broadcast! To get started, simply connect video / audio sources with Ethernet and an ATEN OnAir-installed Android / Windows devices or iPad, and you are ready to roll.

For enterprises in need of delivering remote presentations on Skype, Zoom, MS Teams, OBS, or other platforms for meetings, online events, and webinars alike, the StreamLIVE™ PRO works with ATEN Stream to USB software, which helps convert streams into USB webcam signals. Moreover, the software enables operators to monitor the live production coming from all StreamLIVE™ PRO in a media pool and to broadcast each stream to the right destination.

When it comes to outputting content from an iPhone / iPad, usually UI elements appear on the video feed, which is not aesthetically pleasing. This is where ATEN OnAir Cam app helps! The app helps capture camera feed from an iPhone / iPad and turn it into an 1080p @ 60 Hz HDMI video source devoid of on-screen icons or overlays. Such clean camera feed can be used on the StreamLIVE™ PRO for live stream rig or post production set-up enhancement, achieving higher production value.

Whether users are capturing, editing, or streaming, the StreamLIVE™ PRO, with its ergonomic and practical design, is flexible enough to fit all independent live streaming broadcasting environments. With a rich feature set, the StreamLIVE™ PRO addresses the challenges that independent live streaming broadcasters encounter and provides an easy-to-use solution.

## Features

---

- ♦ All-in-one design to simplify streaming workflow — integrates 1080p video capture, video recorder, video switch, streaming encoder, video converter, video splitter, and audio mixer
- ♦ Professional-quality live streaming everywhere — compatible with every major platform and can livestream to two platforms at the same time from virtually anywhere
- ♦ 1080p recording — features media recording that can be used to record a program and save recordings directly to a connected external hard drive via USB
- ♦ Compact mixer control panel — switches & mixes multiple AV sources with the easily identifiable luminous keys
- ♦ Intuitive and powerful app OnAir — allows for preset up to 8 scenes with custom video layout, preview and full screen program monitoring, real-time editing, transitions in stunning DVE, PbP, or PiP visual effects, and graphical and text overlays for a professional finish
- ♦ DVE (Digital Video Effect) video transition — includes circle drop, window slice, polka dot, circle open, fade, heart, cross hatch, and random square
- ♦ Storyboard-like management — quick and smooth transitions control for professional programming during live events
- ♦ Audio management — multi-channel audio mixing with faders, meters, and balance for every input
- ♦ Fanless and an optimized thermal air flow system for quiet operation
- ♦ Multitask designed handle-stand to enhance portability and ergonomic comfort angle
- ♦ Supports Android / Windows devices or iPads
- ♦ Works with ATEN Stream to USB software — converts streams from multiple StreamLIVE™ PROs into USB webcam signals for delivering remote presentations on Skype, Zoom, MS Teams, OBS, and more.
- ♦ Receives clean HDMI camera feed via ATEN OnAir Cam app — the app helps capture the iPhone / iPad camera feed and turn it into a clean 1080p @ 60 Hz HDMI video source without on-screen icons or overlays for the StreamLIVE™ PRO's usage

## Requirements

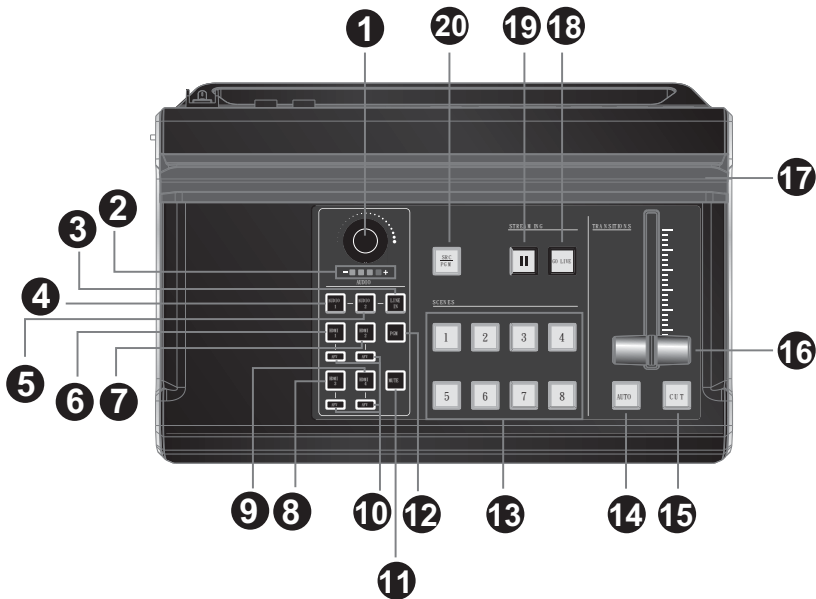
- ♦ Ethernet connection
- ♦ an iPad, Android tablet, or Chromebook with the following specs:

Device Type	OS	other requirements
iPad	iOS 11 or later	iPad Pro (1st gen, 12.9")
		iPad Pro (1st gen, 9.7")
		iPad Pro (2nd gen, 12.9")
		iPad Pro (2nd gen, 10.5")
		iPad Pro (3rd gen, 12.9", or above)
		iPad Pro (3rd gen, 11", or above)
		iPad (5th gen or above)
		iPad Air (3rd gen or above)
		iPad mini (5th gen or above)
Android tablet	Android 9 or later	<ul style="list-style-type: none"> <li>♦ Octa-core ARM Cortex grade CPU or above</li> <li>♦ 2.75 GB RAM or above</li> <li>♦ StreamLIVE™ PRO must be of firmware v1.1.109 or later (see <i>Firmware Upgrade</i>, page 71)</li> </ul> <p><b>Note:</b> Make sure to use a compatible Android tablet. For a list of compatible Android tablets, see <i>Supported List of Android Tablets</i>, page 80.</p>
Chromebook	Chromebook 1.1.105 or later	<ul style="list-style-type: none"> <li>♦ StreamLIVE™ PRO must be of firmware v1.3.121 or later (see <i>Firmware Upgrade</i>, page 71)</li> </ul>
Windows 10	version 17763.0 or later, 32 / 64-bit	<ul style="list-style-type: none"> <li>♦ StreamLIVE™ PRO must be of firmware v1.3.121 or later (see <i>Firmware Upgrade</i>, page 71)</li> </ul>

- ♦ USB Storage Device (for live-stream video recording)
  - ♦ USB 3.x compatible mobile drive (HDD / SSD)
  - ♦ At least 32 GB of free space

# Components

## Top View



No.	Component	Description
<b>Audio Section</b> (Controls the audio settings of the system)		
1	audio level control	Controls the volume of the audio source selected.
2	volume meter	The LED reflects the controlled volume. During firmware upgrade, the LED behavior is changed. Refer to <i>Upgrading the Unit</i> on page 73 for the LED behavior during firmware upgrade.
3	MIC / Line-in selector	Switches between the MIC / Line-in audio source. The button is lit when switched to this source.
4	MIC / Line-in audio 1	Switches to the MIC / Line-in audio 1 source. The button is lit when switched to this source.
5	MIC/Line-in audio 2	Switches to the MIC / Line-in audio 2 source. The button is lit when switched to this source.
6	HDMI 1 audio source	Switches to the HDMI 1 audio source. The button is lit when switched to this source.

No.	Component	Description
7	HDMI 2 audio source	Switches to the HDMI 2 audio source. The button is lit when switched to this source.
8	HDMI 3 audio source	Switches to the HDMI 3 audio source. The button is lit when switched to this source.
9	HDMI 4 audio source	Switches to the HDMI 4 audio source. The button is lit when switched to this source.
10	AFV	Audio-Follows-Video: Press to light the AFV button. the source's audio is played whenever its video is being displayed.
11	mute	Mutes / unmutes the audio of the audio source selected. Muting HDMI source 1, 2, 3, or 4, will also turn off its AFV.
12	PGM	Switches to the audio of PGM. The button is lit when switched to this source.

**Video Section** (controls the video settings of the system)

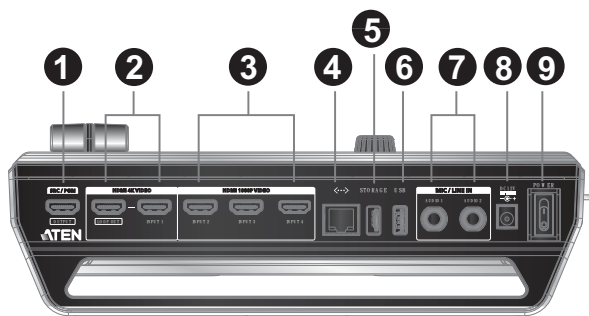
13	scenes selector	Selects the current stream (PGM) scene and the preview (PRV) scene.  Greenly lit button indicates PRV Preview. Redly lit button indicates PGM Preview.
----	-----------------	---

**Transition Control Section** (switches the current stream (PGM) scene to the preview (PRV) stream and vice versa)

14	auto (transition)	Pressing the <b>Auto</b> button performs the transition at a set interval (0.3 - 3 seconds). Go to the Setting Deck and refer to page 52 on how to modify this specified time.  Press and hold for 3 seconds to enter <i>Quick Mode</i> . Refer to <i>Edit the video scenes in scene editor</i> , <i>tune audio settings in the audio mixer deck</i> , <i>adjusting audio delays in the settings deck</i> , etc. Tap <i>Apply</i> to apply the changes. on page 70 for more information.
15	cut (transition)	The transition happens immediately when you press the <b>Cut</b> button.  Press and hold for 3 seconds to enter <i>Quick Mode</i> . Refer to <i>Edit the video scenes in scene editor</i> , <i>tune audio settings in the audio mixer deck</i> , <i>adjusting audio delays in the settings deck</i> , etc. Tap <i>Apply</i> to apply the changes. on page 70 for more information.

No.	Component	Description
16	T-Bar (transition)	Slide the T-Bar to start the transition. The scene transition speed depends on how fast you slide the bar. Sliding the T-bar all the way to one end will complete the transition. You can create different effects by sliding it slowly, quickly or even pausing it halfway.
17	iPad stand	Holds the iPad for convenient viewing.
18	Go Live	Press this button to <i>start</i> streaming and/or recording. Press again to <i>stop</i> .
19	pause stream	Press this button to enter a pause screen during streaming.
20	SRC / PGM view selector	Press to switch displaying between HDMI source 1, HDMI source 2, HDMI source 3, HDMI source 4, and PGM.

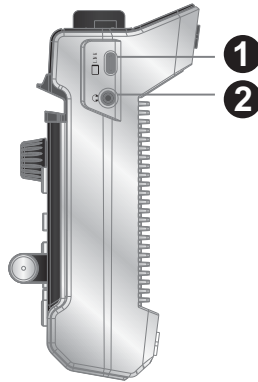
Rear View



No.	Component	Description
1	SRC / PGM output port	Programmed (PGM) video output.
2	4K HDMI loop out port/4K HDMI 1 input port	An 4K HDMI 1 input source and a 4K HDMI loop out.
3	FHD HDMI 2 input port/HDMI 3 input port/HDMI 4 input port	HDMI 1080P video input that can take HDMI 1080P video input 2, 3, or 4. To select input 2, 3, or 4, go to <i>Media</i> on page 40.
4	Ethernet port	For Internet connection.
5	USB 3.1 Gen1 Type-A port (storage only)	For livestream recording.
6	USB 3.1 Gen1 Type-A port	For firmware upgrade.
7	MIC in/Line in audio ports	Connect MIC or audio sources for additional audio effects.
8	power jack	Powers the unit.
9	power switch	Switch the power on the unit.



## **Side View**



No.	Component	Description
1	iPad link port (data only)	Connects to the iPad for ATEN OnAir app.
2	3.5mm audio monitor jack	Sound output for the PGM scene (the redly lit scene).

This Page Intentionally Left Blank

## Chapter 2

# Hardware Setup



Please review the safety information regarding the placement of this device in *Safety Instructions*, page 77.

### Connecting the StreamLIVE™ PRO Unit

---

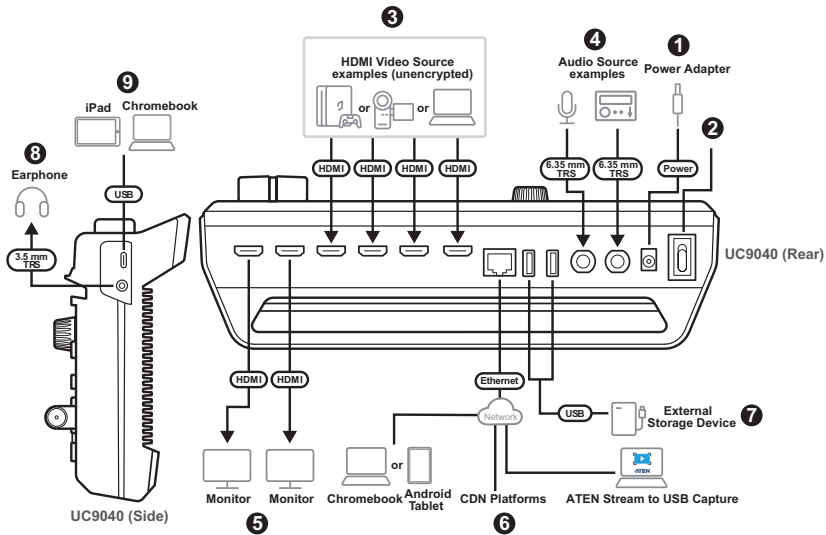
Before you begin to connect the StreamLIVE™ PRO, make sure to download and install the ATEN OnAir PRO app on your iPad / Android tablet / Chromebook / Windows device. To install the StreamLIVE™ PRO app, scan the QR codes below.

For Windows device users, please download the app using the Microsoft Store Download Link below.

<http://www.microsoft.com/en-us/p/aten-onair/9ndjk7b1mbmd?activetab=pivot:overviewtab>



Follow the steps below to connect the StreamLIVE™ PRO to HDMI sources and the host.



1. Plug the power adapter into the StreamLIVE™ PRO's power jack and into an AC power source.
2. Turn on the power switch on the StreamLIVE™ PRO.
3. Connect your HDMI sources (e.g. PC, gaming console, or video recorder)<sup>1</sup>.
4. Connect a mic-in and/or line-in audio source.
5. (Optional) Connect the SRC / PGM output port and the 4K HDMI loop out port if necessary:
  - a) Connect an HDMI display to the SRC / PGM output port.
  - b) Connect an HDMI display to the 4K HDMI loop out port.
6. Connect the StreamLIVE™ PRO to the Internet using an Ethernet cable<sup>2</sup> and follow the on-screen instructions on the ATEN OnAir™ Pro app to complete the configuration. If you wish to control the StreamLIVE™ PRO using an Android tablet or Chromebook via network, , make sure the Android tablet or Chromebook and the StreamLIVE™ PRO are installed within the same network environment. See *Pairing an Android Tablet or Chromebook via Network*, page 15.

7. (Optional) If you wish to record your live stream, connect a USB storage device and refer to *Recording Live-stream Video (External Storage)* on page 60 for more information. Or, you can connect a UAC audio interface (e.g. USB mic).
8. Connect an earphone to listen to and monitor sound outputs.
9. Connect your iPad or Chromebook to the iPad link port for control purpose and power supply. Refer to *Connecting iPad* on page 14 and *Connecting Chromebook*, page 16 for more information.
10. (Optional) Place your iPad onto the iPad stand as shown in the diagram below<sup>3</sup>.



---

**Note:** 1. The HDMI sources must be unencrypted.

2. Use the connected iPad or Android tablet to configure further network settings for livestreaming.
  3. iPad placed on the unit is recommended for viewing only. Hand holding your iPad is still recommended for control.
-

## **Connecting iPad**

### **iPad with Lightning Connector**

For iPads with lightning connectors, using the USB-C to USB Type-A cable included, connect its USB-C end to the StreamLIVE™ PRO and its USB-A end to an Apple Lightning to USB 3 Adapter (not included, may need additional purchase), which shall connect to your iPad.

If you wish to have the charging function, connect your lightning charging cable to the Apple Lightning to USB 3 Adapter.

### **iPad with USB-C Connector**

For iPads having USB-C connectors, simply connect the USB-C to USB-C cable included between your iPad and the StreamLIVE™ PRO.

## Pairing an Android Tablet or Chromebook via Network

To pair an Android tablet or Chromebook to the StreamLIVE™ PRO via network, make sure the StreamLIVE™ PRO and the Android tablet or Chromebook are both connected to the same network environment, and then do the following.

1. Connect a monitor to the SRC / PGM output port.
2. Press and hold the PGM pushbutton for 3 seconds to display a QR code on the monitor.
3. Open the ATEN OnAir™ Pro app on the Android tablet or Chromebook, and tap **Scan QR Code to connect device**.



4. Use the QR code scanner to scan the QR code displayed on the monitor.



Your Android tablet or Chromebook is now connected with the StreamLIVE™ PRO.

You may refer to the link below for a video demonstration containing the following:

- ♦ a tutorial on how to upgrade the StreamLIVE™ PRO firmware
- ♦ a tutorial on how to use an Android table to remotely control the StreamLIVE™ PRO

<http://www.youtube.com/watch?v=S1NCHnAMKQI>

## **Connecting Chromebook**

There are two ways to connect a Chromebook to the StreamLIVE™ PRO. You can either connect the Chromebook via network or connect the Chrombook directly to the StreamLIVE™ PRO using the USB-C to USB Type-A cable provided.

- ♦ To connect the Chromebook via network, see *Pairing an Android Tablet or Chromebook via Network*, page 15.
- ♦ To connect the Chromebook directly to the StreamLIVE™ PRO, simply connect the USB-C to USB Type-A cable included between your Chromebook and the StreamLIVE™ PRO.



## Using the OnAir Cam App

To use your camera feed on an iOS mobile device as video source through the OnAir Cam app, install the app from App Store.


### Supported Systems

The ATEN OnAir Cam app supports the following mobile operating systems:

Mobile Operating System	Supported Versions
iOS	version 10 or later

### Installing the ATEN OnAir Lite App

1. Install the ATEN OnAir Cam app on an iOS mobile device.

- From the mobile device, tap the **App Store**  icon.
- In the search box, type “ATEN OnAir Cam”.
- Tap ATEN OnAir Cam and install the app.

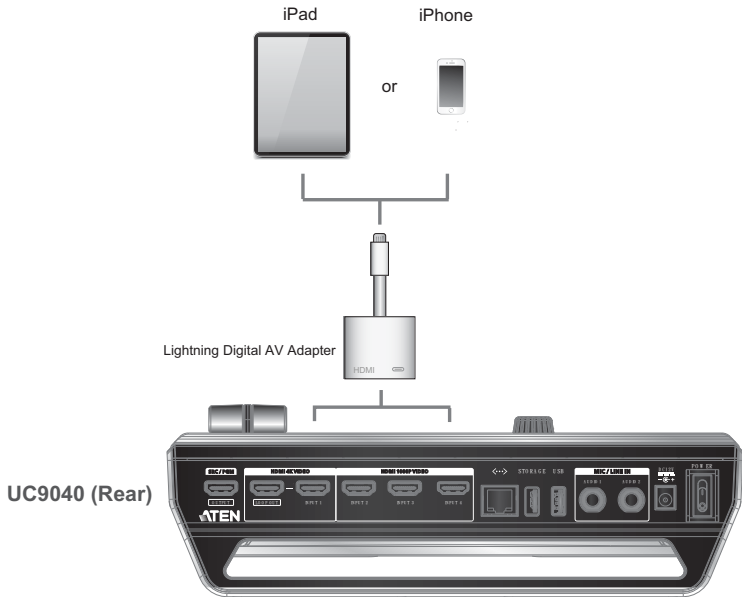
2. From the mobile device, tap the **ATEN OnAir Cam app** icon



3. Follow the on-screen instructions.

## **Connecting the iOS Mobile Device**

Before using the ATEN OnAir Cam app, make sure to connect your iOS mobile device to the StreamLIVE™ PRO's HDMI input ports using a Lightning Digital AV Adapter (Apple) or any other lightning to HDMI adapter.



# Chapter 3

## ATEN OnAir PRO App & Side Menu

### ATEN OnAir PRO Application

---

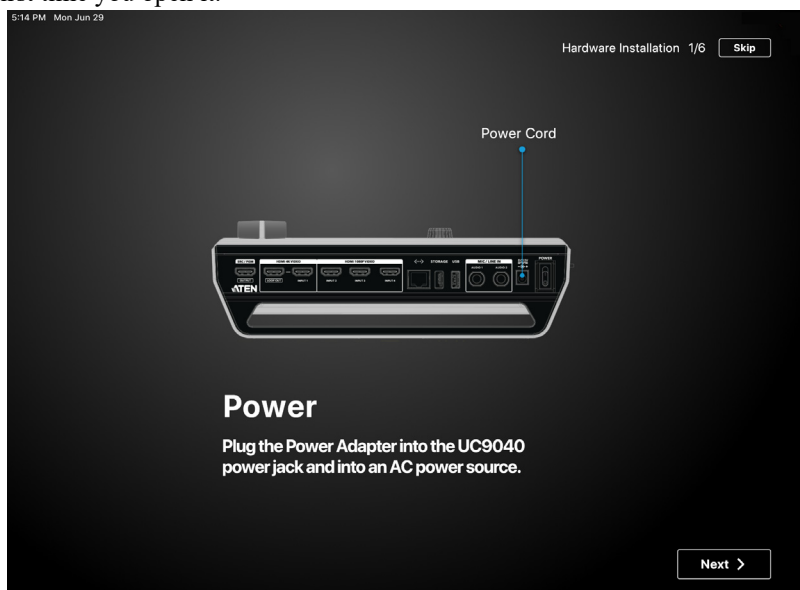
ATEN OnAir PRO app acts as the central controller for UC9040. The app's design is a control panel where you can monitor program results, edit scenes, setup video and audio stream settings, stream recording settings, etc.

Download the ATEN OnAir PRO app from App Store and install it on your iPad.

The icon looks like the one below:

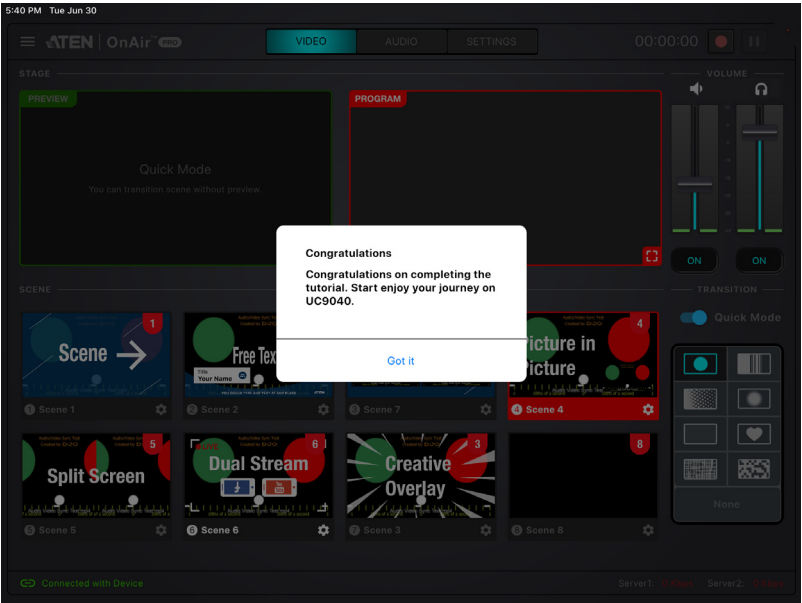




Tap to open the ATEN OnAir PRO application and the tutorial will start for the first time you open it.



Follow the on-screen instruction as it guides you through the basics of using the ATEN OnAir PRO app with UC9040.



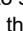
When finished, a message will be shown:




To run the tutorial again, tap the  icon on the top left corner for the side menu and tap  Tutorial.

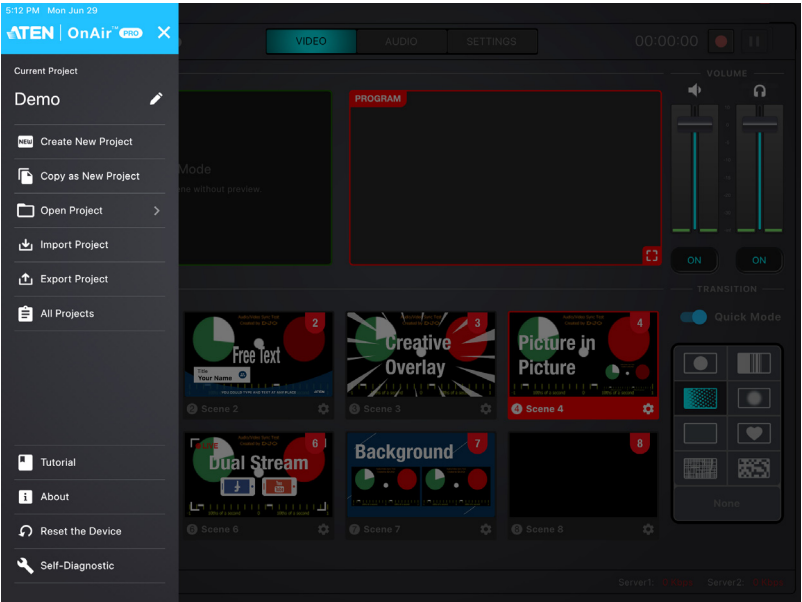
# Page Components




No.	Component	Description
1	Side Menu	Tap the  icon for the side menu. Refer to <i>Side Menu</i> on page 22 for more details.
2	Deck Selector	Tap to select the desired configuration deck. Three decks are available: Video Mixer, Audio Mixer and Setting.
3	GoLive	Tap  to start streaming. Tap  to pause streaming. The timer on the left shows how long you have been streaming for.
4	Deck Content	The content depends on the selected deck.
5	iPad Link Status	Displays the link status between your iPad and the StreamLIVE™ PRO.
6	Network Traffic Status	Displays the network traffic status.

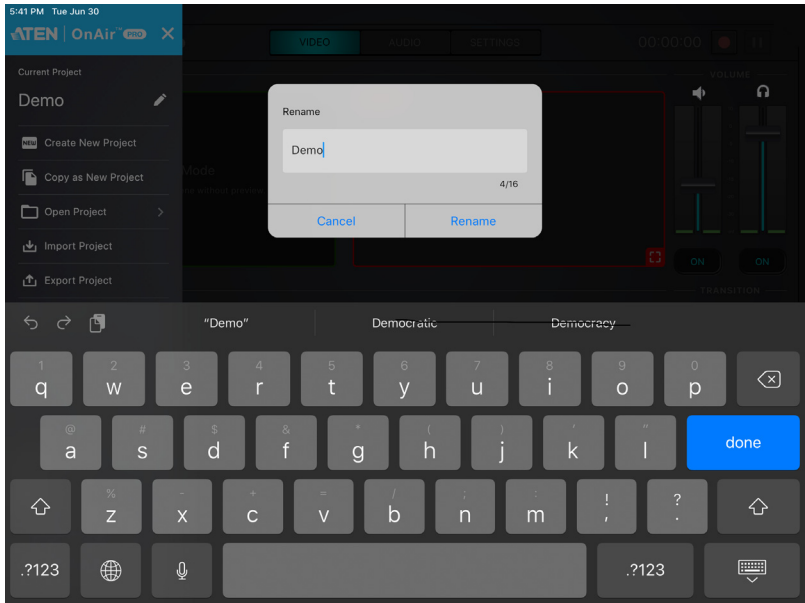
# Side Menu

A side menu is available for project management, tutorial, app information and self-diagnostic function. For the side menu, tap the  icon on the top left corner.



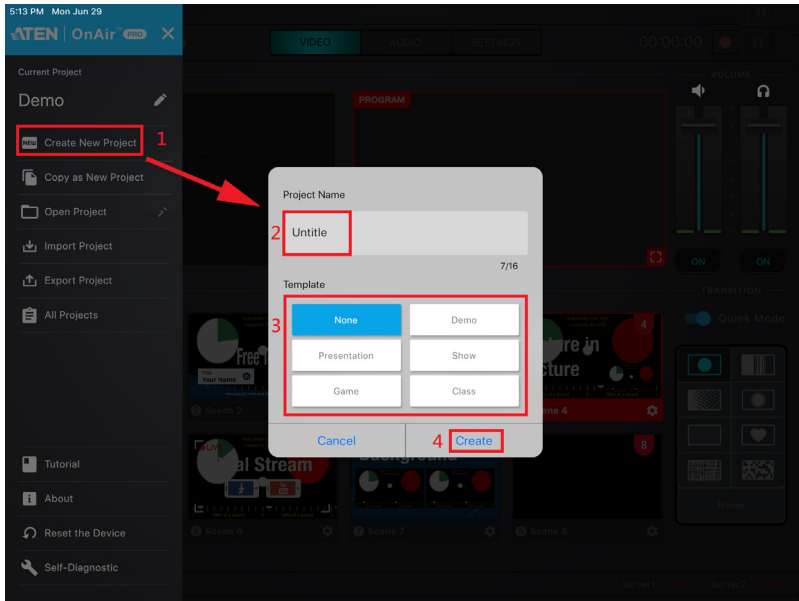
## Current Project

Tap the  icon to edit the name of your project:



## Create Project

### 1. Tap Create New Project.



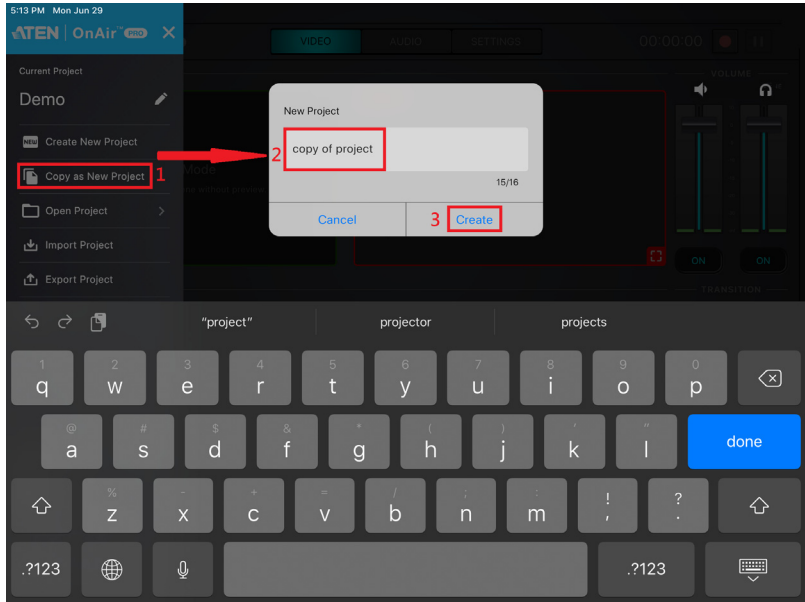
2. Enter a name for the project.
3. (Optional) Select a template. Templates are project settings pre-configured for you if you are unsure how your new project should be.
4. Tap **Create**.



## Copy as New Project

If you like the settings of your current project when you are to create a new one, you can use this function copy the settings.

### 1. Tap **Create New Project**.

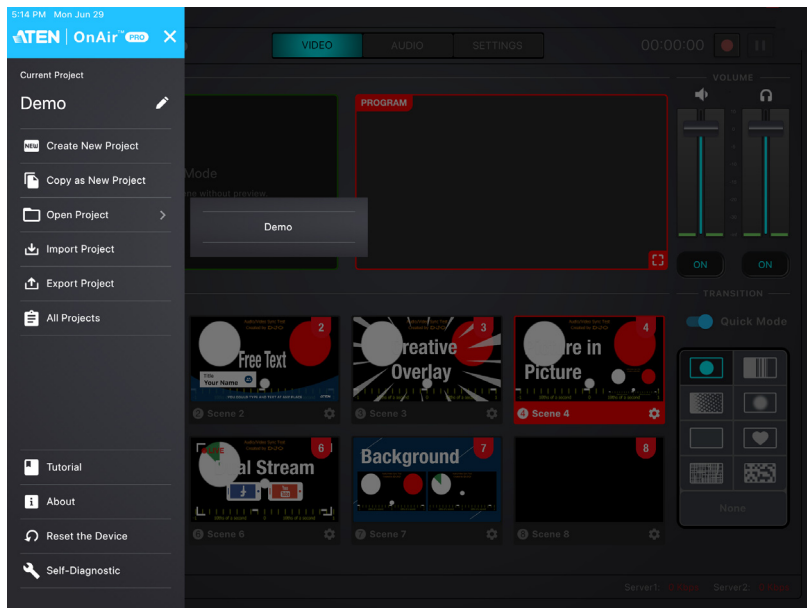


### 2. Enter a name for the project.

### 3. Tap **Create**.

## Open Project

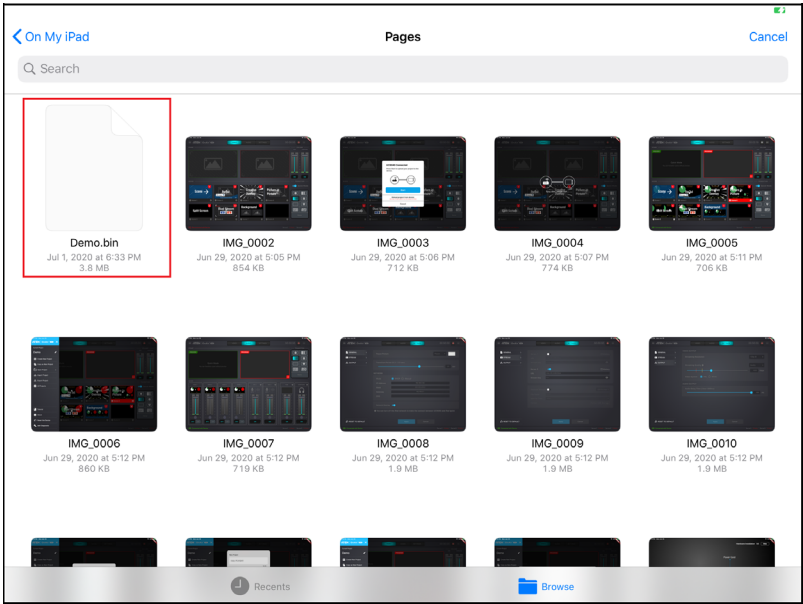
Tap **Open Project** for a list of available projects. An example is shown:



Tap to select the project you wish to use.

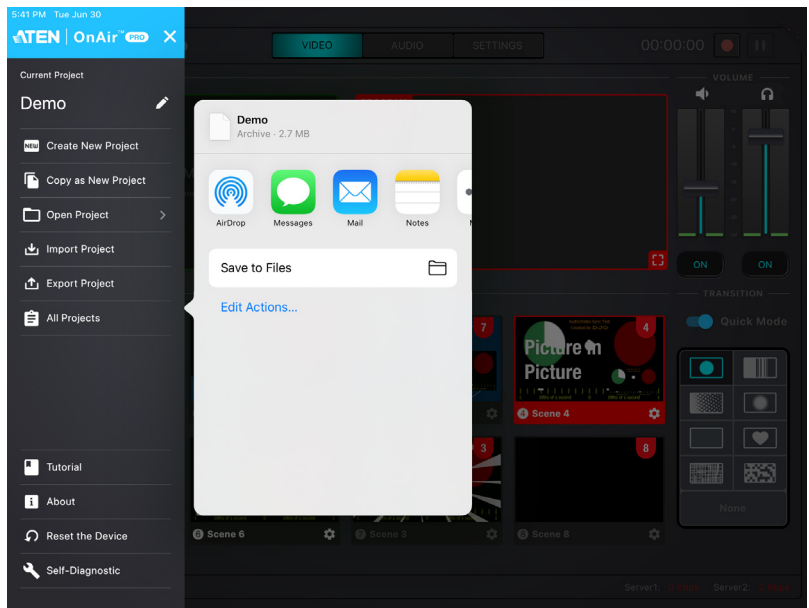
## Import Project

Tap **Import Project** to import a project to the ATEN OnAir PRO app. Please select a bin file as highlighted below, ATEN OnAir PRO app cannot import image file.



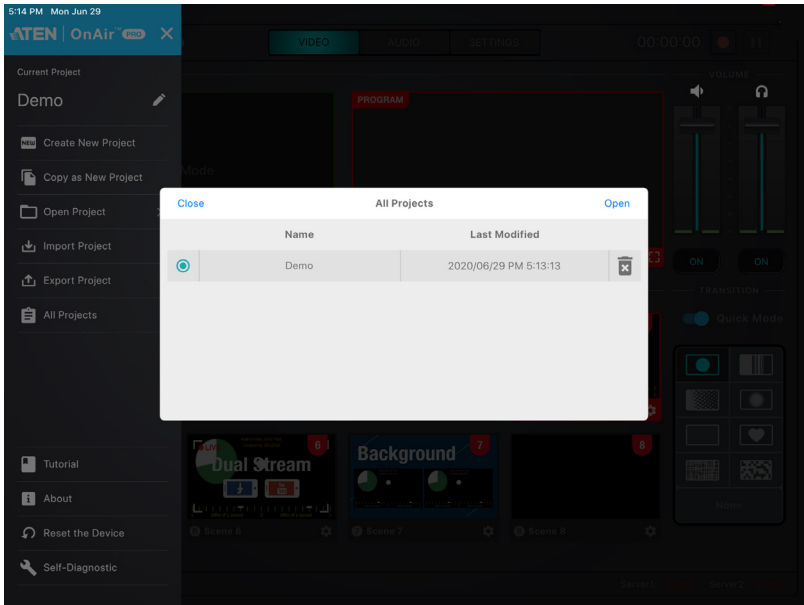
## Export Project

Tap **Export Project** to export and share your projects.



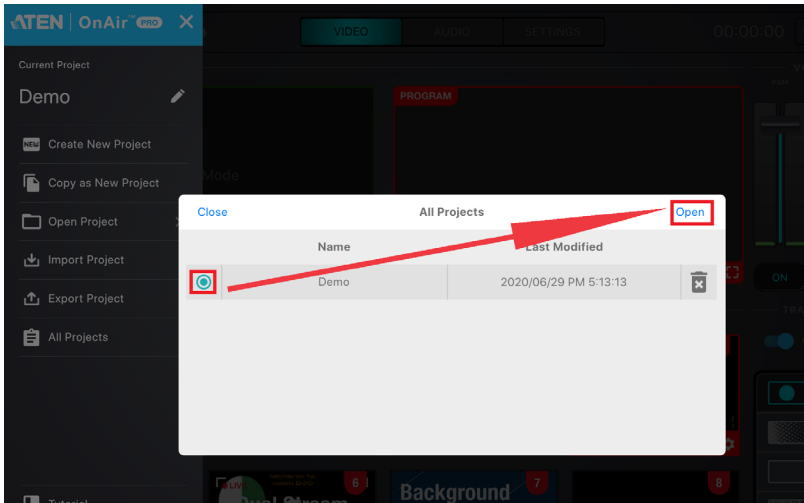
## All Projects

For information of the available projects, tap **All Projects**. An example is shown:

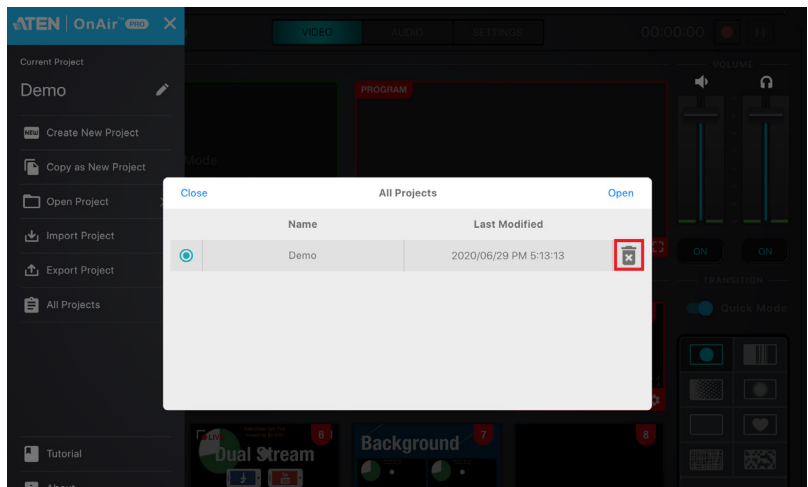


You can also open or delete the projects here.

To open a project, tap to select a project and tap **Open**. An example is shown:

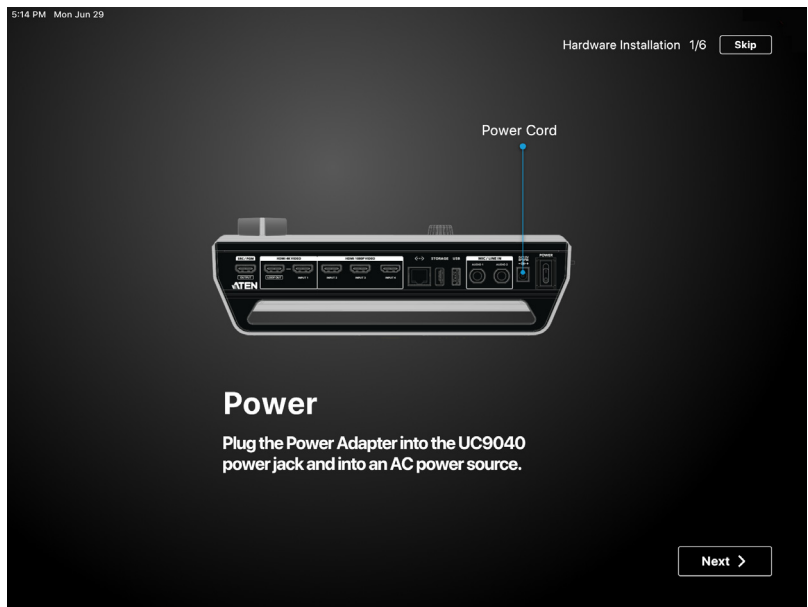


To delete a project, tap the garbage can icon corresponding the project. An example is shown:



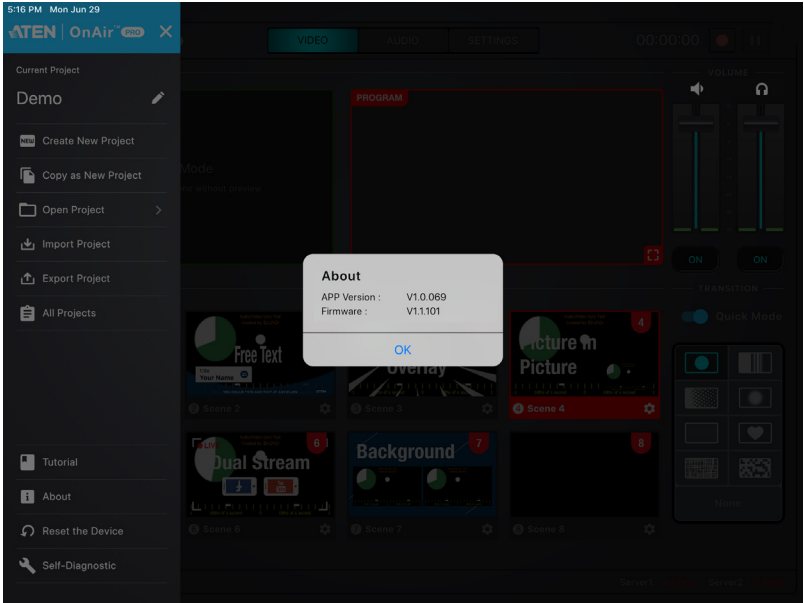
**Tutorial**

Tap **Tutorial** to go through the tutorial again.



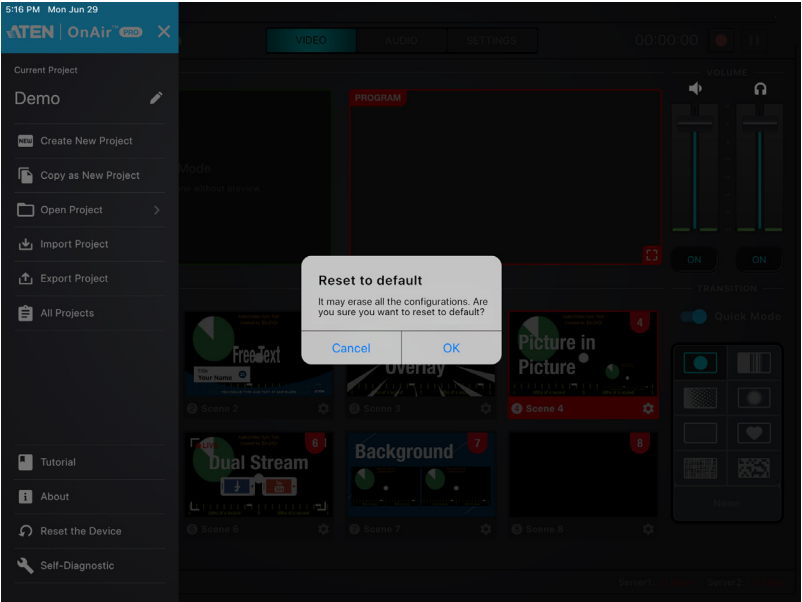
About

Tap **About** for information of the ATEN OnAir PRO app. An example is shown below:



**Reset the Device**

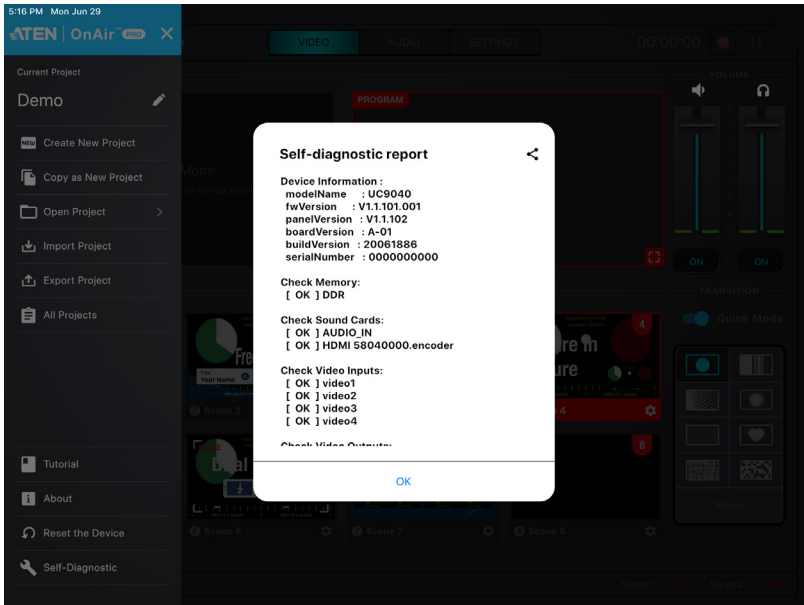
Tap **Reset the Device** to reset the StreamLIVE™ PRO to its factory default settings. A warning message below appears and tap **OK**.





## Self-Diagnostic

Tap **Self-Diagnostic** to self-diagnose for a report. An example is shown:



You can tap the  icon to share the report.

This Page Intentionally Left Blank

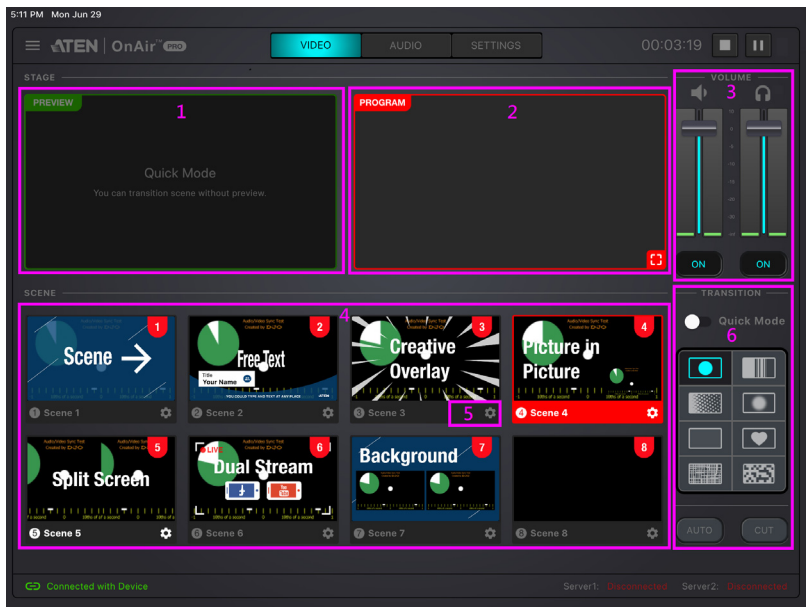
# Chapter 4

## ATEN OnAir PRO App & Video Mixer


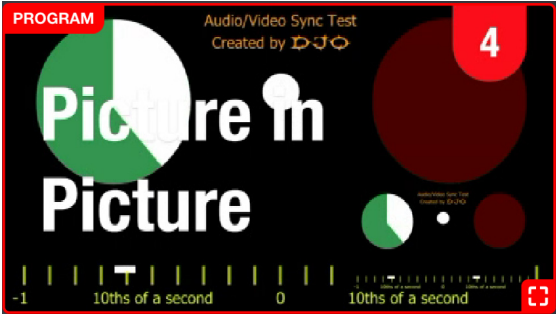

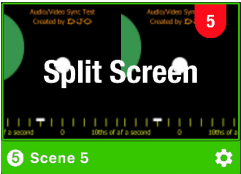
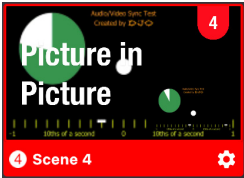
### Video Mixer

The video mixer page allows you to preview videos of PRV and PGM, adjust MIC and PGM volume, scene selection and editing, and transition control.

The components of the page is shown below:





No.	Component	Description
1	PRV Preview	The preview scene.



No.	Component	Description
2	PGM Preview	<p>The program scene, or the on-air video output of the system.</p> <p>You can tap  on the bottom right-hand corner or tap on the scene twice to view the video source in full screen mode. An example is shown below:</p>  <p>Tap the  <b>BACK</b> icon on the top left-hand corner or tap the scene twice to return to the previous page.</p>
3	Volume Control	<p>Tap and drag the volume slider to adjust PGM and earphone volume.</p>
4	Scene Selector	<p>8 scenes are shown here.</p> <p>Green outline scene = PRV Preview.</p> <p>e.g. </p> <p>Red outline scene = PGM Preview.</p> <p>e.g. </p> <p>Tap a scene to put the scene into the PRV Preview section.</p> <p>Tap and hold a scene to re-order the scene sequence.</p> <p>To put the scene in PRV Preview to PGM Preview, use the Transition Control (explained below).</p>

No.	Component	Description
5	Scene Editor	You can configure each individual scenes by tapping this icon. Refer to <i>Scene Editor</i> on page 39 on how to edit each scene.
6	Transition Control	Controls the switching between the current stream (PGM) scene and the preview (PRV) stream. Refer to <i>Transition Control</i> on page 37 on how to use this function.









## Transition Control

To enable Quick Mode, Tap  Quick Mode to start Quick Mode ( Quick Mode).

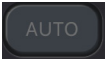
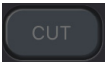
During Quick Mode, PRV preview disappears and you can tap any of the scenes to broadcast the scene as the PGM preview.

To disable Quick Mode, Tap  Quick Mode again to exit Quick Mode ( Quick Mode).

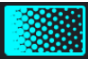
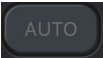
There are eight DVE switching effects for the transition control.

No.	Component	Description
1		Circle Drop
2		Window Slice
3		Polka Dot
4		Circle Open
5		Fade ( <b>Default</b> )
6		Heart
7		Cross Hatch
8		Random Square

Transition Control when the Quick Mode is Disabled

Component	Description
	Tapping the <b>Auto</b> button will begin the transition after a specified time (0.3-3.0 seconds). Go to the Setting Deck and refer to page 52 on how to modify this specified time.
	Tapping the <b>Cut</b> button and the transition happens immediately.

To set a DVE switching effect for the PGM preview, do the following:

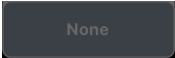
1. Select a DVE switching effect, the icon lights up .
2. Tap the **Auto**  button.



Transition Control when the Quick Mode is Enabled

To set a DVE switching effect for the PGM preview, do the following:


1. Select a DVE switching effect, the icon lights up.
2. Tap on a scene of your choice from the Scene Selector to enable the selected DVE switching effect after the specified time (0.3-3.0 seconds). Refer to page 52 on how to modify this specified time.

If you do not want any DVE switching effect for the PGM preview, do the following:

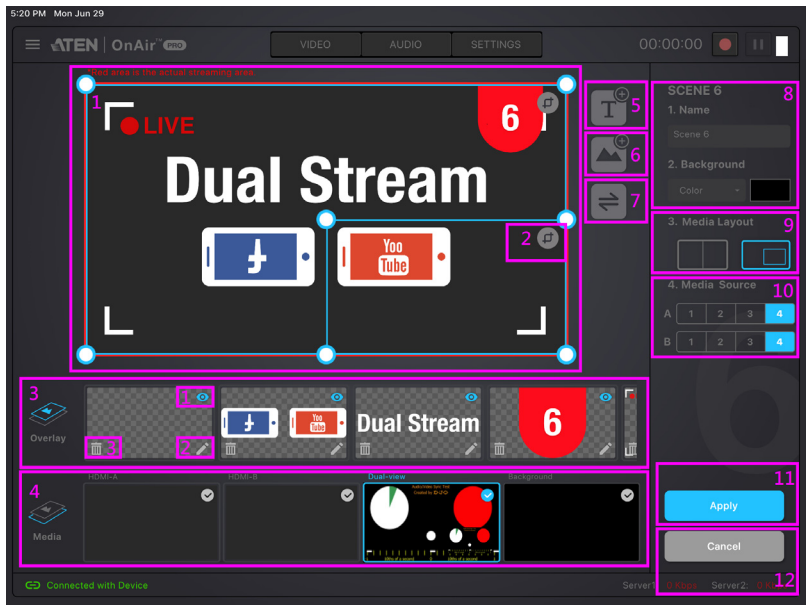
1. Select , the icon lights up.
2. Tap on a scene of your choice from the Scene Selector to instantly broadcast the selected scene as the PGM preview.

To disable Quick Mode, Tap  again to exit Quick Mode ().

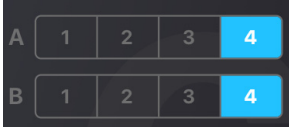

## Scene Editor

When you tap the  icon under a scene in the scene selector region, you can start editing the scene's display.

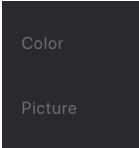
An example is shown below:



No.	Component	Description
1	Scene Display	This region is how this scene will be displayed. You can configure the components within the region.
2	Resize/Crop tool	Tap to resize/crop the selected item. Refer to <i>Resize/Crop Tool</i> on page 42 on how to use this function.
3	Overlay	Edit overlay in this region. You can <b>Delete</b> , <b>Edit</b> , and <b>Show/Hide Overlay</b> . 1. Show/Hide Overlay: Tap to show or hide 2. Edit: Tap to edit 3. Delete: Tap to delete You can also re-order the overlays to determine which overlay is to be displayed on top. Refer to <i>Re-order the Overlays</i> , page 45 for more details.

No.	Component	Description
4	Media	<p>Select the source(s) and how the source(s) are laid out for the scene.</p> <ol style="list-style-type: none"> <li>1. HDMI-A: Display an input source between HDMI 1, HDMI 2, HDMI 3, and HDMI 4 input sources.</li> <li>2. HDMI-B: Display an input source between HDMI 1, HDMI 2, HDMI 3, and HDMI 4 input sources.</li> </ol>  <ol style="list-style-type: none"> <li>3. Dual View: Dual View Mode (Picture-in-Picture or Picture-by-Picture).</li> <li>4. Background: Plain Background.</li> </ol>
5	Add Text Overlay	<p>Tap this icon to add a text overlay. Refer to <i>Add/Edit Text Overlay</i> on page 44 below for more information.</p> <p>To edit the location and size of the overlay, select the overlay in the “Overlay” region and configure in the “Scene Display” region.</p> <p>The added overlay will appear in the “Overlay” region.</p> <p>Up to 30 text overlays (layers) are support per scene.</p>
6	Add Image Overlay	<p>Tap this icon to add an image overlay.</p> <p>Tapping  allows you to add an Image Overlay. iPad will flip to the Photos page for you to select an image. Select the image and tap OK.</p> <p>To relocate, tap and hold the overlay to drag.</p> <p>To resize, refer to <i>Resize/Crop Tool</i> on page 42.</p> <p>The added overlay will appear in the “Overlay” region.</p> <p>Up to 5 image overlays (layers) are support per scene.</p>
7	Switch Video Source (Dual-View)	<p>During dual-view, tapping this button switches video source position between 1 and 2.</p>



No.	Component	Description
8	Scene Information	<p>This region displays the scene name and background.</p> <p>Tap the <b>Name</b> field to edit.</p> <p>Tap the <b>Background</b> field to select between Color or Picture.</p> 
9	Media Layout	<p>Tap to select the preferred dual-view (Picture-in-Picture or Picture-by-Picture) layout.</p> <p>You can also resize the dual-view.</p>
10	Media Source	<p>HDMI-A: Select an input source between HDMI 1, HDMI 2, HDMI 3, and HDMI 4 input sources to be displayed on HDMI-A.</p> <p>HDMI-B: Select an input source between HDMI 1, HDMI 2, HDMI 3, and HDMI 4 input sources to be displayed on HDMI-B.</p>
11	Apply	Tap this button to apply the configuration into this scene.
12	Cancel	Tap this button to cancel all configurations made in this page.

**Resize/Crop Tool**

This section describes how to resize or crop any of the components in the “Scene Display” region.

**Resize**

To resize any component, tap the component (overlay or media) and a resize tool will be visible on the the “Scene Display” region. Examples are shown below:



Tap and hold to drag the resize tool to resize the component.

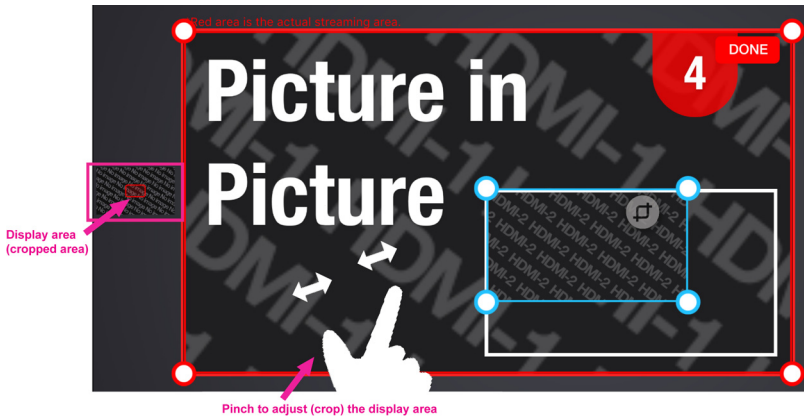
## Crop (Media Only)

To resize a media, tap the media. An example is shown:




Tap the Resize/Crop Tool to start the tool.

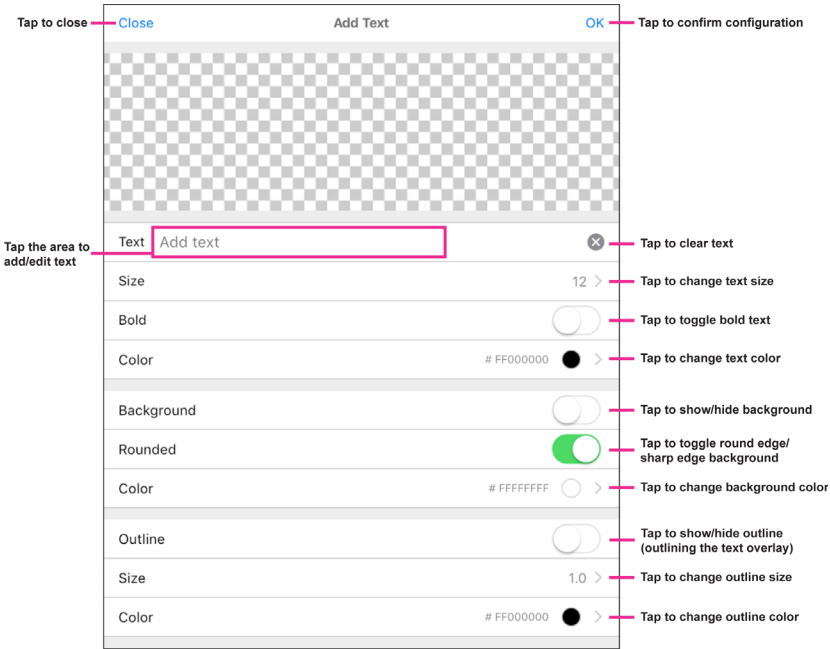
Pinch your finger inward or outward to crop. A small box is on the left of the “Scene Display” region to show the display area (cropped area).



When completed, tap **DONE** on the top right corner.

Add/Edit Text Overlay

Tapping  allows you to add a Text Overlay to the scene. A pop-up configuration page and its description is shown below:

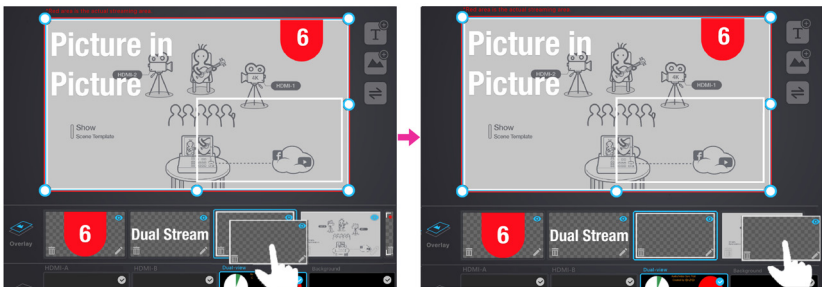


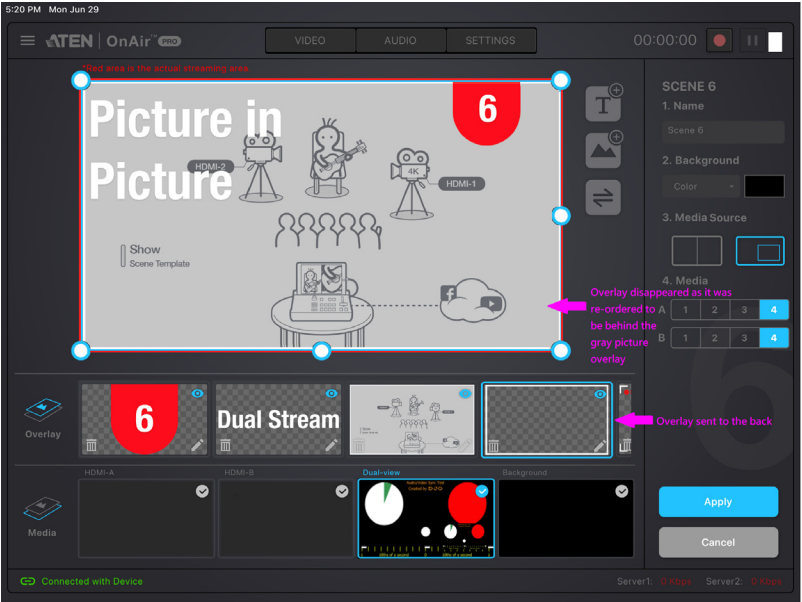
When completed, tap **OK** to save the configuration and return to the previous screen.

To edit the location and size of the overlay, select the overlay in the “Overlay” region and configure in the “Scene Display” region.

## Re-order the Overlays

To re-order the overlays, tap and hold the overlay you wish to re-order. The overlay can then be dragged. You can drag the overlay to the place you wish it to be placed within the Overlay region. An example is shown:





Chapter 5



ATEN OnAir PRO App & Audio Mixer

Audio Mixer

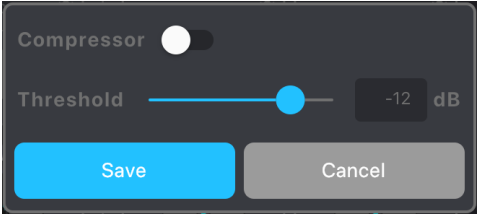

The components of the Audio Mixer deck page is shown below:



No.	Component	Description
1	Audio Level Control	<div>Slide the volume slider to control the volume of each audio source.</div> <div><div>ON</div>: The audio is turned off (muted)</div> <div><div>ON</div>: The audio is turned on (unmuted)</div> <div>Tap <b>On</b> to turn on/off the sound for the source.</div>

No.	Component	Description
2	HDMI 1, 2, 3, and 4 Audio Control	<div><div><div>AFV</div><div>ON</div></div>Audio-Follows-Video ON: Broadcasting the source's video will also play the source's audio.</div> <div><div><div>AFV</div><div>ON</div></div>ON: The audio is turned on (unmuted).</div> <div><div><div>AFV</div><div>ON</div></div>OFF: The audio is turned off (muted).</div>
3	MIC Gain Control	<div>You can adjust the MIC Gain settings here:</div> <div><div><div>Gain</div><div><div></div><div></div></div><div>+20 dB</div></div><div><div>Mode</div><div>Mono</div><div></div></div><div><div>Save</div><div>Cancel</div></div></div> <div><div>Mono</div><div>Stereo</div></div> <div>Tap the  to adjust the options.</div>
4	L/R Balance Control	Tap and hold to drag and control which side of the sound source is to be more emphasized.
5	Master/PGM Level Control	Slide the volume slider to control the volume of Master/ PGM.
6	Master/PGM Compressor	<div>You can adjust the Master/PGM Compressor here:</div> <div><div><div>Compressor</div><div><div></div><div></div></div></div><div><div>Threshold</div><div><div></div><div></div></div><div>-12 dB</div></div><div><div>Save</div><div>Cancel</div></div></div> <div>Tap  to enable/disable the compressor function and drag the dial to adjust the threshold.</div>
7	Earphone Level Control	Controls the volume level of the earphone.



No.	Component	Description
8	Earphone Compressor	<p>You can adjust the Earphone Compressor here:</p>  <p>Tap  to enable/disable the compressor function and drag the dial to adjust the threshold.</p>

This Page Intentionally Left Blank

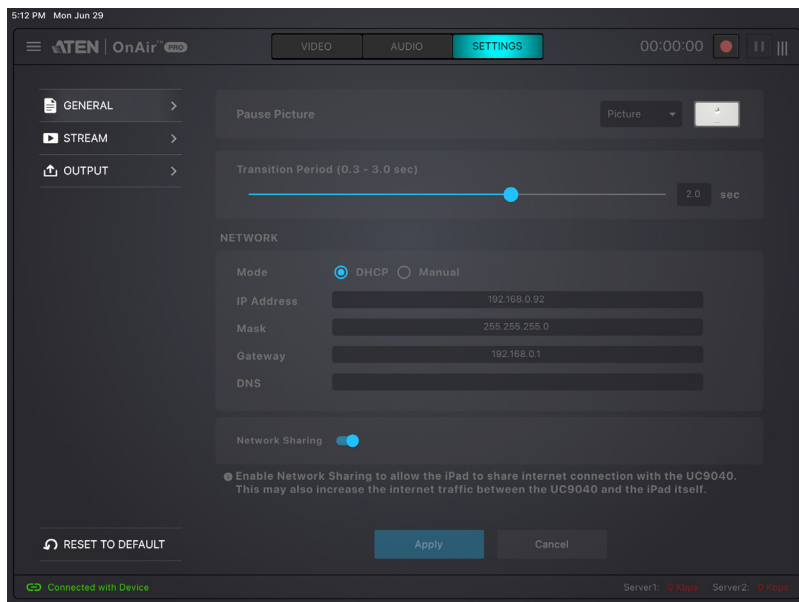
# Chapter 6

## ATEN OnAir PRO App & Settings

### Settings

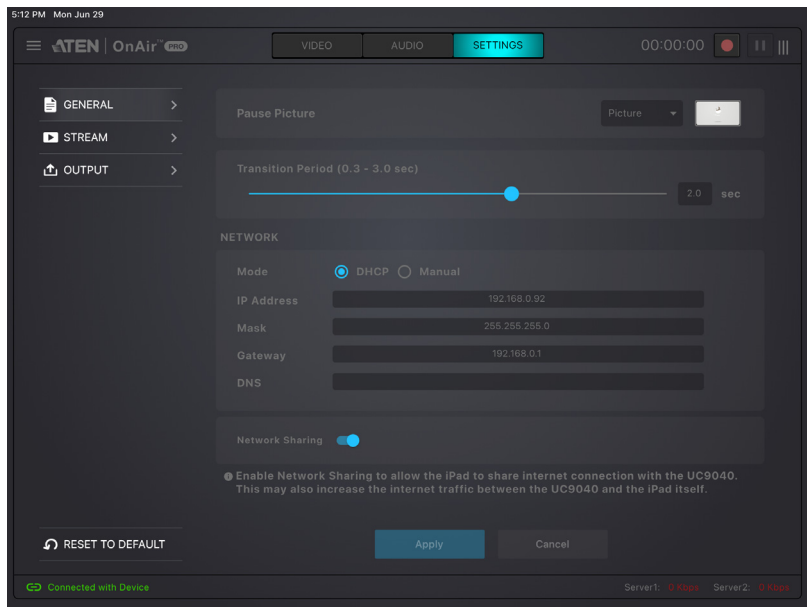
---

The Setting deck page is shown below:



If you have configured a settings, **Apply** button will light up. Click it to apply the settings.

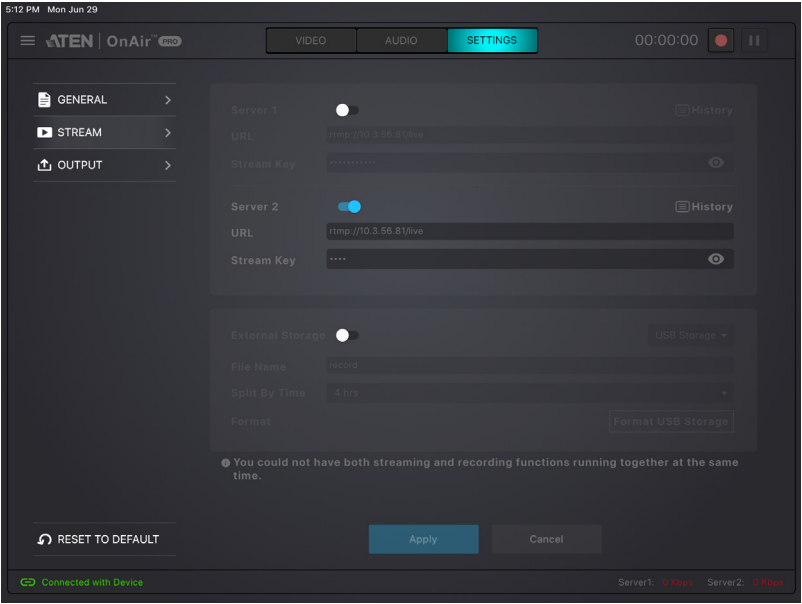
General







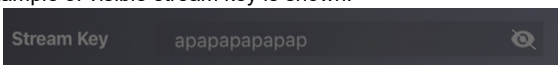






Component	Description
Pause Picture	<p>Pause picture is the display when the streaming is paused. You can select black, the pause logos, or upload your own custom logo.</p> <div><p>Picture</p><p>Black</p></div>
Transition Period	<p>This is the scene transitioning delay for the <b>Auto</b> button (on the app or on the unit). Choose between 0.3 and 3 seconds. (Refer to <i>Transition Control</i> on page 37 for the <b>Auto</b> button behavior)</p>

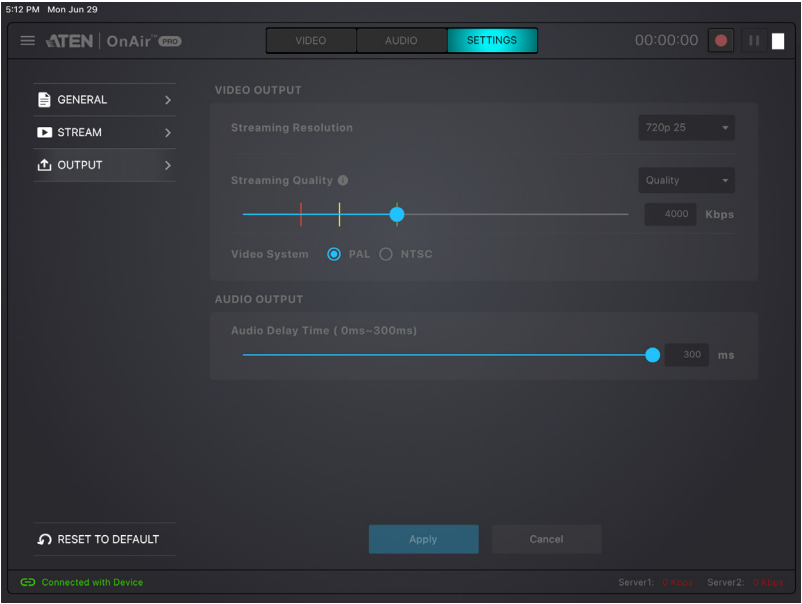
Component	Description
Network Settings	<p>Choose your preferred network configuration methods.</p> <p><b>Mode:</b></p> <ul style="list-style-type: none"> <li>◆ <b>DHCP:</b> The network automatically assigns IP address and the corresponding fields.</li> <li>◆ <b>Manual:</b> If you are in a place where you are unable to utilize the DHCP method, you will need to get the settings, possibly from IT, and input them into each field here manually.</li> </ul> <p><b>Network Sharing:</b> Enable to allow the iPad to share internet connection with the StreamLIVE™ PRO. This may also increase the internet traffic between the StreamLIVE™ PRO and the iPad itself.</p>

Stream



Component	Description
Stream Connection Settings	<p>Configure live-stream and external recording information here:</p> <p><b>Server 1 &amp; 2:</b></p> <p>: disable stream.</p> <p>: enable stream.</p> <p>You can stream to two platforms simultaneously* if you enable both Server 1 &amp; 2.</p> <p>For the stream key field, an eye icon will be shown. Tap to toggle between  and .</p> <p> represents invisible stream key.</p> <p> represents visible stream key.</p> <p>An example of visible stream key is shown:</p> <div data-bbox="354 582 911 646"></div> <p>Tap  <b>History</b> to select a previous keyed-in URL and Stream Key.</p> <div data-bbox="376 702 889 829"></div> <p>If you wish to paste a copied stream key into the field, make sure it is visible .</p> <p><b>URL and Stream Key:</b> Obtain the URL and Stream Key from the platform(s) you wish to livestream on and put them into their corresponding fields.</p> <p>An example URL and Stream Key is shown in <i>Example Live-stream URL and Stream Key (Facebook)</i> below.</p> <p>Detailed configuration of your live-streaming / video recording software / platform is not within the scope of this user manual, please refer to the software / platform's instruction guide / manual.</p> <p><b>Record Live-stream Video</b></p> <p>If you wish to record the video live-stream as a video output*, you can enable the <b>External Storage</b> (). For more details on setting up your live-stream video recording, refer to <i>Recording Live-stream Video (External Storage)</i> on page 60.</p> <p><b>Note:</b> A maximum of 2 stream outputs are allowed:a) 2 streams, b) 1 stream and 1 recording, c) 1 stream, or d) 1 recording</p>

Output

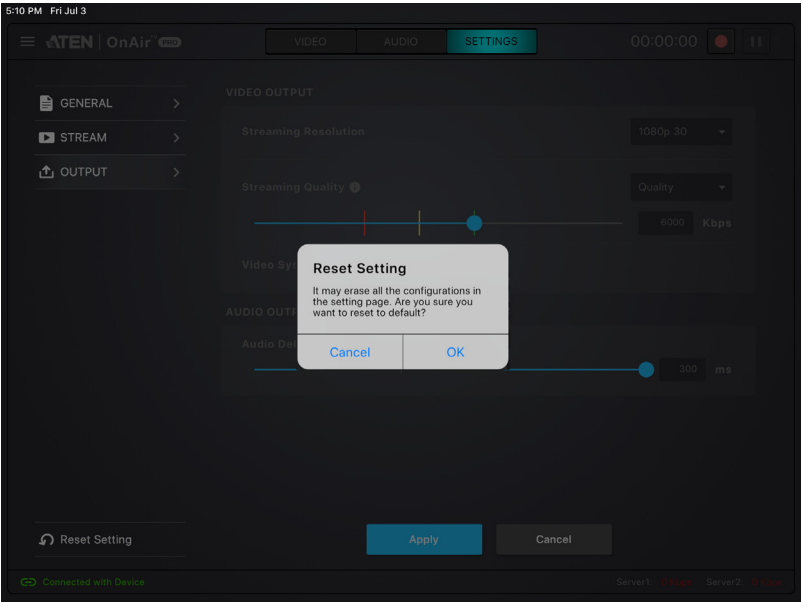




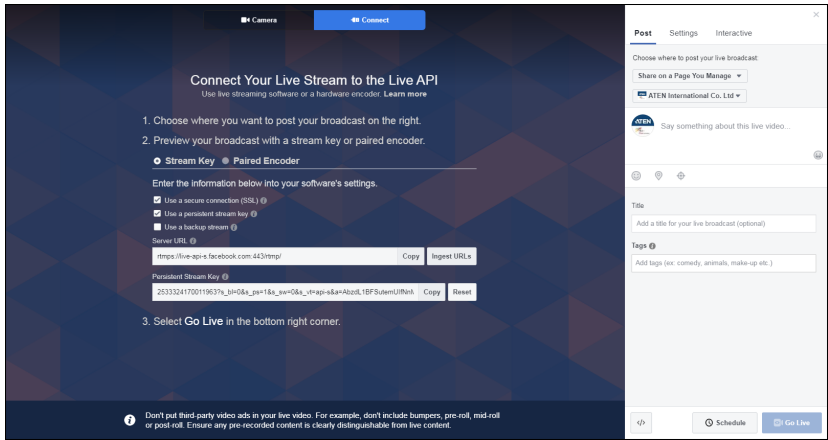
Component	Description
Video Output	<p><b>Streaming Resolution:</b> Select your stream resolution from one of the following:</p> <div> 1080p 30  720p 60  720p 30  480p 60  480p 30 </div> <p><b>Streaming Quality:</b> Select the quality from one of the following.</p> <div> Fluent  Normal  Quality  Manual </div> <p>If manual is selected, the quality slider will light up and you can tap and drag the slider to a desired stream quality.</p> <div> Streaming Quality ● <div>Quality ▾</div> <div>4000 Kbps</div> </div> <p><b>Video System:</b> Click to select the video system of your choice.</p> <div> Video System <input checked="" type="radio"/> PAL <input type="radio"/> NTSC </div>
Audio Output	<p><b>Audio Delay Time:</b> If you are experiencing audio delays (due to network or other reasons), you can adjust this slider, in milliseconds, to sync the audio with the video.</p>

**Reset Settings**

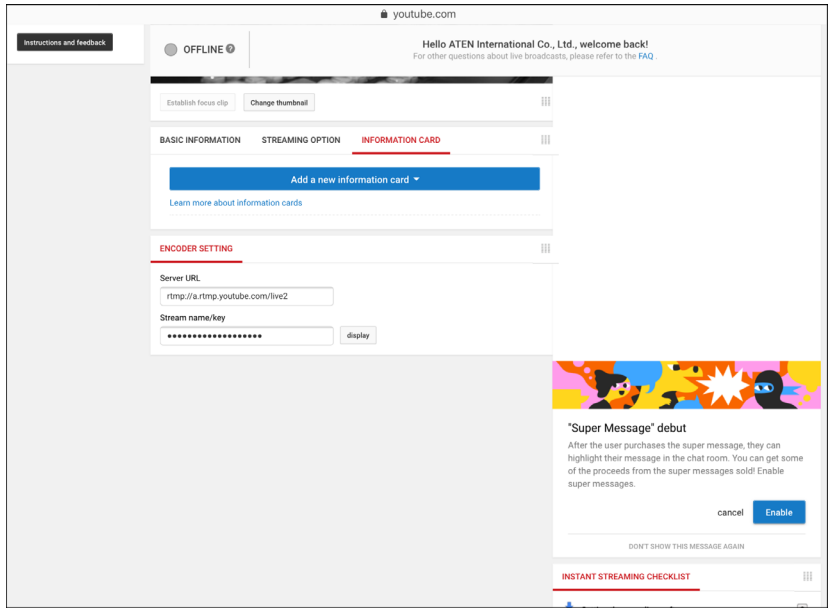
Tap to reset the configurations you have made to this device’s settings page.



Example Live-stream URL and Stream Key (Facebook)



Example Live-stream URL and Stream Key (YouTube)



## **Recording Live-stream Video (External Storage)**


Before you start recording the live-stream videos, make sure that you have a storage device ready to start and is connected to the StreamLIVE™ HD.

Recording live-streams requires a USB 3.0 or later storage device. It is **HIGHLY** recommended that you use an external hard drive (with at least 32GB worth of storage).

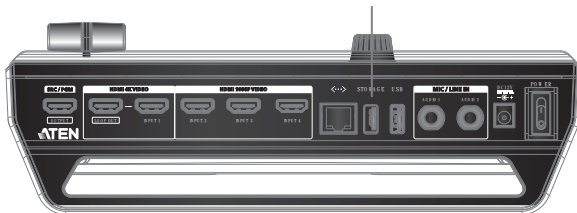
When you first connect the storage device, the ATEN OnAir PRO app will verify its format and USB spec. If the format is not desirable, the ATEN OnAir PRO app will ask if you would like to format it. Make sure the files in the storage device are backed up before you format it.

When the format is desirable, you can start recording your live-stream.

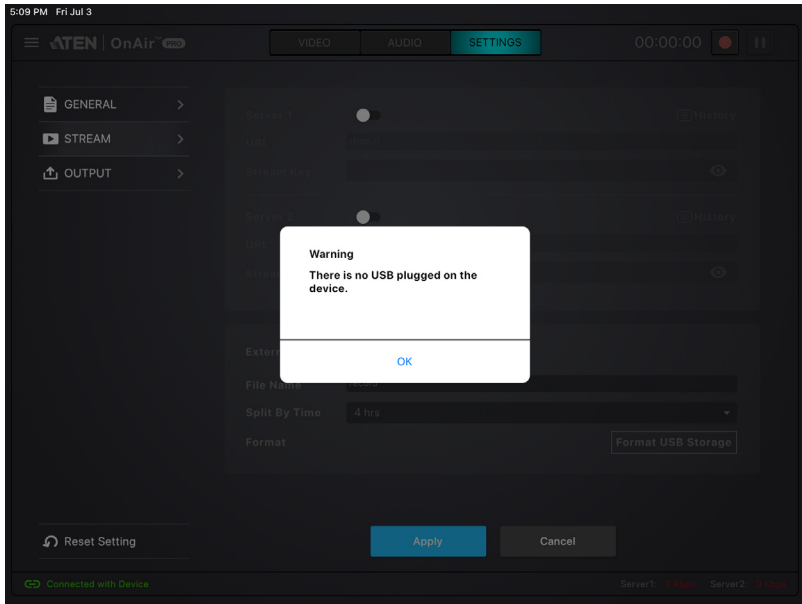
### **External Storage Settings**

Enable the **External Storage** (  ) by plugging a USB3.0 USB storage device to the USB 3.1 Gen1 Type-A port (storage only) located on the StreamLIVE™ PRO's rear panel.

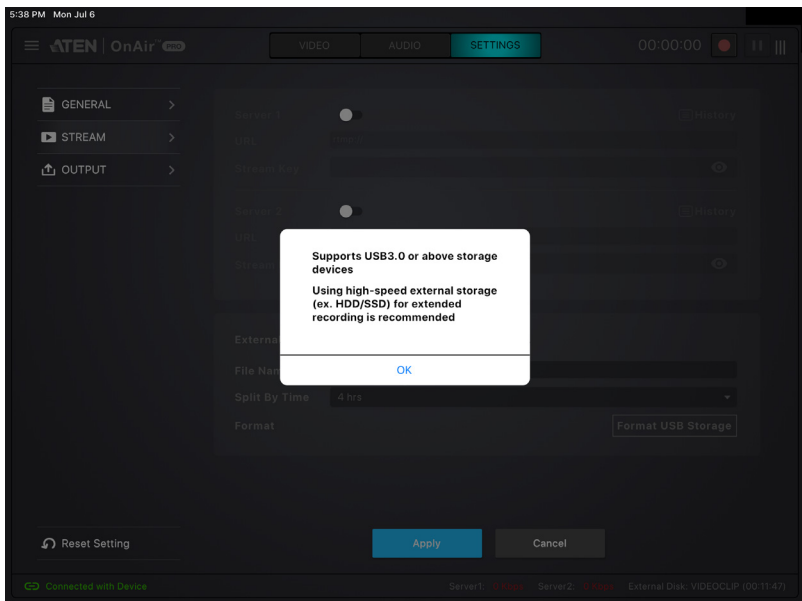
#### For Live-stream Video Recording



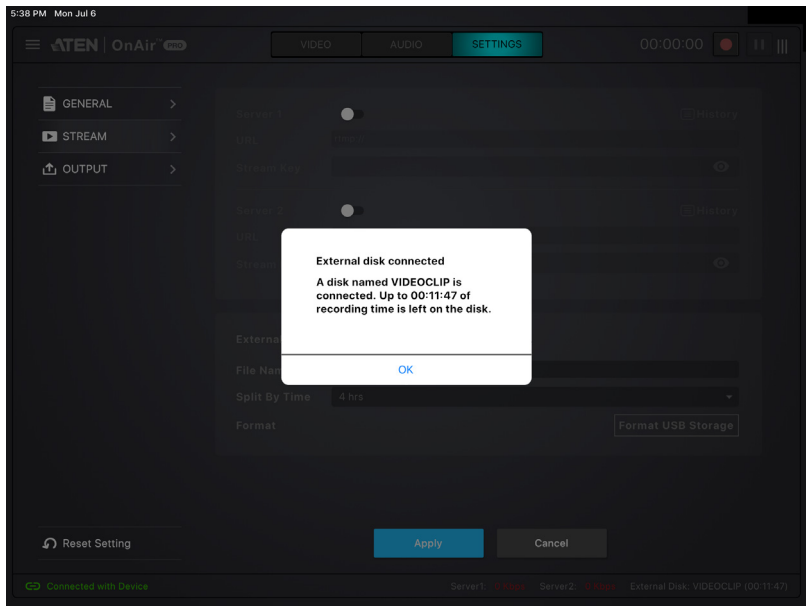
A warning message appears if there is no USB3.0 or later storage device plugged into the StreamLIVE™ PRO.



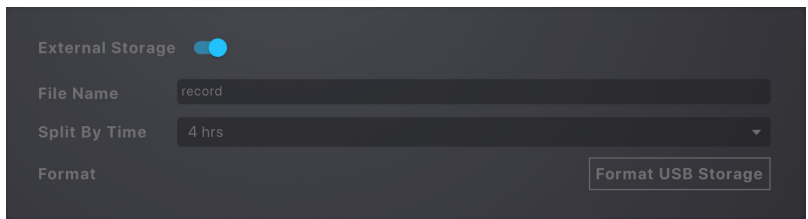
A warning message appears if the storage device plugged into the StreamLIVE™ PRO is not a USB3.0 or later storage device.



A confirmation message appears when a USB3.0 or later storage device is plugged into the StreamLIVE™ PRO.



Now you may configure the storage device’s record settings or format the device manually.

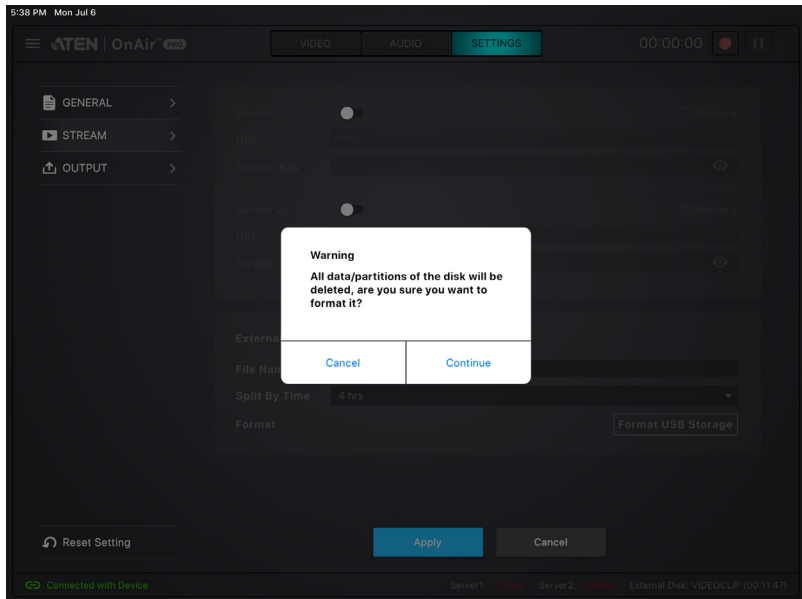


Tap the **File Name** field to adjust the file name of the recording(s).

Tap the **Split By Time** drop-down menu to select how long a recording is before splitting into the next recording. The drop-down menu is shown:



Tap **Format USB Storage** to manually go through the format process. A warning message below appears.



## **Video Information for Live-stream Recording**

Video Format: 1080p30

Video Compression: H. 264

Audio Compression: AAC

Video Container Format: MP4

Does not support uncompressed recording.

Record Media: USB 3.0 hard drive

Does not support SD card.



# Chapter 7

## Quick Live-Stream Setup

### Setup

---

Before you start live-streaming, you need to setup your live-stream platform on the UC9040.

Setting these up can be on any interface (PC, laptop, tablets, etc.) as long as you are able to get the *Server URL* and *Stream Key*.

This section will therefore take you through obtaining the Server URL and Stream Key, input them into the ATEN OnAir PRO app, synchronize the ATEN OnAir PRO app with the UC9040 and start streaming using your iPad.

Follow the steps below:

---

**Note:** Facebook is the streaming platform example used in the setup steps below.

---

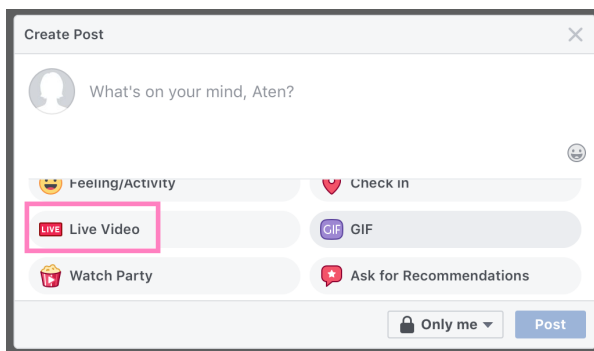
1. On the iPad, open Safari (Internet browser) and go to the Facebook page.

---

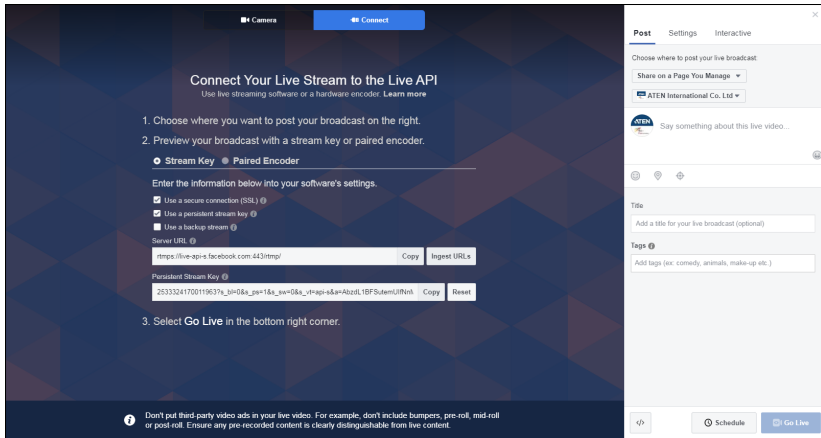
**Note:** Make sure your iPad is Internet-enabled and is using desktop mode. If your iPad is always bringing you to the facebook app (or youtube, twitch, etc.), remove it from the system first and install it again later.

---


2. Log into your account.
3. On the dashboard, locate and tap the **What's on your mind** field.
4. Tap to select **Live Video**.



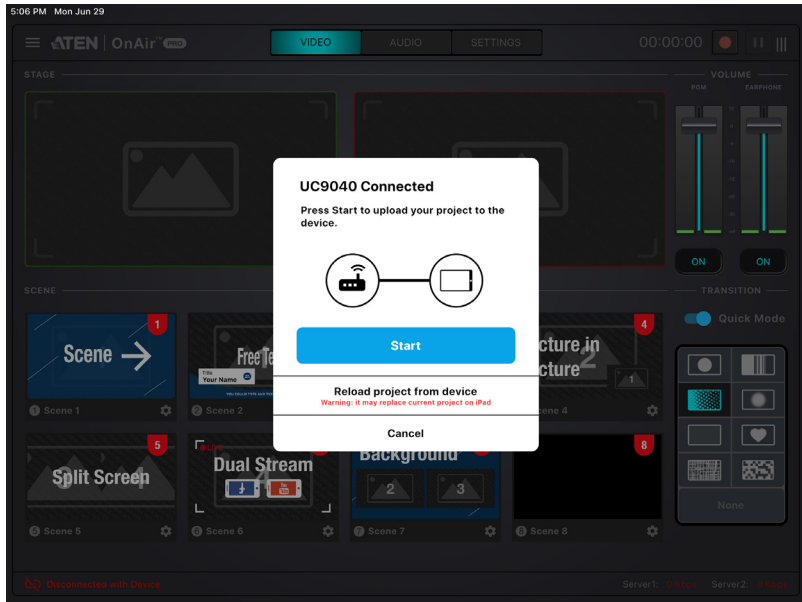
5. Tap the **Connect** button up top. A page similar to the one below is shown:



6. Server URL and Stream Key are displayed here. Copy them and enter them into their corresponding fields in the stream settings section under the “Setting” deck of the ATEN OnAir PRO app.

- Note:**
1. Make sure the eye icon in the Stream Key field is shown as  to allow you to paste the key.
  2. It is highly recommended to check the “Use a persistent stream key” checkbox to keep this stream key.

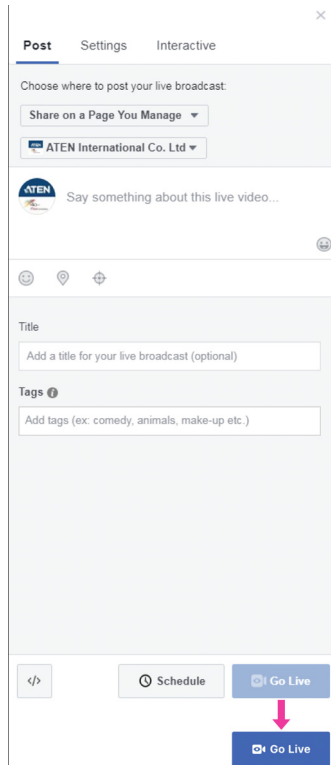
7. Connect the iPad to your UC9040. The ATEN OnAir PRO app will ask you about the synchronization option. Tap **Start**.



8. Configure other settings on the ATEN OnAir PRO app and press the GO LIVE button on the unit or on the ATEN OnAir PRO app:



9. Disconnect iPad from the unit and go to the Facebook **Connect** page. Upon receiving the stream, the **Go Live** button (on the bottom-right of the page) will light up.



10. You can tap **Go Live** to start broadcasting your stream, or you can edit the information here (scope not part of this manual) before you start broadcasting your stream.

11. Connect your iPad to the unit to control the stream using the ATEN OnAir PRO app.

---

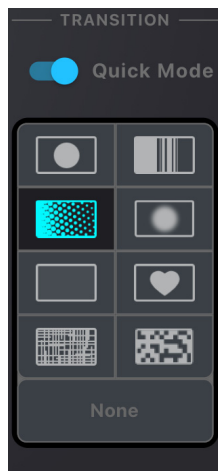
**Note:** Streaming on other streaming platforms using the unit requires the same information (Server URL and Stream Key), refer to their websites for more information.

---

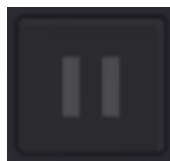
## **During the Live-Stream / Live-Stream Recording**

During the live-stream or the live-stream video recording, you can:

- ◆ Use the transition function (T-bar, Auto button or Cut button) to switch PRV preview image to the PRG preview.



- ◆ Press the Pause button to pause streaming.



- ◆ Press the GO LIVE button again to stop the stream.

- ♦ Edit the video scenes in scene editor, tune audio settings in the audio mixer deck, adjusting audio delays in the settings deck, etc. Tap **Apply** to apply the changes.

# Chapter 8

## Firmware Upgrade

### Download Requirements

---

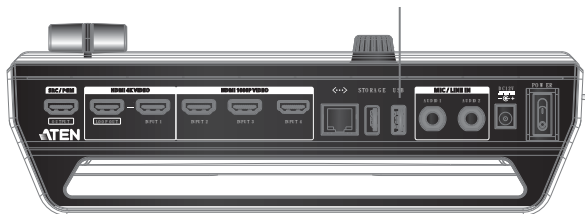
- ♦ A computer connected to the Internet.
- ♦ An empty external storage device or a USB flash drive with at least 1.1GB of free space.

### Preparing the Firmware

---

1. On the external storage device, create a folder named “uc9040\_img”.
2. Download the complete software and unzip it.
3. Save your file (in the format “uc9040\_Vx.x.xxx.bin”) to the “uc9040\_img” folder.
4. Plug the external storage device to the rear USB 3.1 Gen1 Type-A port of the unit. See *USB 3.1 Gen1 Type-A port*, page 8.

For Firmware Upgrade



5. Refer to *Upgrading the Unit* on page 73 to start firmware upgrade.

- Note:**
- ♦ A folder named “uc9040\_img” must be created in the root menu of the USB storage device.
  - ♦ The firmware upgrade file (\*.bin) must be placed in the “uc9040\_img” folder.
  - ♦ The firmware upgrade file should look like the following:

uc9040\_Vx.y.yyy

where x and y combine to indicate its version and

**x** = 1-9

**y** = 0-9

- ♦ The unit will upgrade using the newest firmware. For example, if the folder has a “uc9040\_V1.0.080” file and a “uc9040\_V1.1.102” file, the unit will upgrade using the “uc9040\_V1.1.102” file.
-



## Upgrading the Unit

Follow the steps below to upgrade the unit.

**Note:** Make sure the prepared USB storage device is plugged into the rear USB port (USB 3.1 Gen1 Type-A port) of the unit.

## For Firmware Upgrade

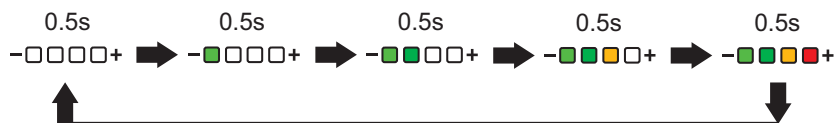


1. Press the **Cut, Pause** (the **II**) and **Mute** buttons at the same time to start the firmware upgrade.
2. The unit will start the Upgrade Assessment where all the Volume Meter LEDs will blink every 0.5 seconds. Pictorial behavior is shown below:



3. If the assessment succeeds, the unit will start upgrading.

The Volume Meter LED will start filling in from the negative side every 0.5 seconds. When all the LEDs are filled, they will all dim for 0.5 seconds and start filling in again. Pictorial behavior is shown below:



**Note:** If the upgrade assessment fails, the **GO LIVE** button and the last LED of Volume Meter LEDs will blink every 0.3 seconds. Refer to *Upgrade Assessment Fail* on page 74 for more information.

4. If the firmware upgrade was successful, the first LED of the Volume Meter LEDs will blink every 0.3 seconds. The unit will reboot after some time to complete the process.



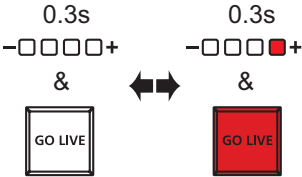
---

**Note:** If the firmware upgrade fails, the last LED of Volume Meter LEDs will blink every 0.3 seconds. Refer to *Upgrade Fail* on page 75 for more information.

---

**Upgrade Assessment Fail**

When the upgrade assessments fail (e.g. when no USB storage device is connected or USB drive does not have a firmware upgrade file, etc.), the **GO LIVE** button and the last LED of Volume Meter LEDs will blink every 0.3 seconds.



Press the **GO LIVE** button to return the unit to normal operation and try again from step 1.

## **Upgrade Fail**

If firmware upgrade fails during the firmware upgrade (e.g. disconnected USB storage device or power, etc.), the last LED of Volume Meter LEDs will blink every 0.3 seconds.



The unit will reboot after some time and try to upgrade the firmware again.

If it fails again, it will reboot and try again.

When this happens, it is likely that the upgrade file is corrupted. We recommend:

1. Unplug the power and the USB storage device from your UC9040.
2. Retrieve the firmware file again and recheck the USB preparation process (*Download Requirements*).
3. Replug your USB storage device.
4. Replug the power. The unit will start the upgrade process after booting up.

If you are still unable to upgrade the unit's firmware, please contact your dealer.

This Page Intentionally Left Blank

## **Safety Instructions**

---

### **General**

- ♦ This product is for indoor use only.
- ♦ Read all of these instructions. Save them for future reference.
- ♦ Follow all warnings and instructions marked on the device.
- ♦ Do not place the device on any unstable surface (cart, stand, table, etc.). If the device falls, serious damage will result.
- ♦ Do not use the device near water.
- ♦ Do not place the device near, or over, radiators or heat registers.
- ♦ The device cabinet is provided with slots and openings to allow for adequate ventilation. To ensure reliable operation, and to protect against overheating, these openings must never be blocked or covered.
- ♦ The device should never be placed on a soft surface (bed, sofa, rug, etc.) as this will block its ventilation openings. Likewise, the device should not be placed in a built in enclosure unless adequate ventilation has been provided.
- ♦ Never spill liquid of any kind on the device.
- ♦ Unplug the device from the wall outlet before cleaning. Do not use liquid or aerosol cleaners. Use a damp cloth for cleaning.
- ♦ The device should be operated from the type of power source indicated on the marking label. If you are not sure of the type of power available, consult your dealer or local power company.
- ♦ To prevent damage to your installation it is important that all devices are properly grounded.
- ♦ Do not allow anything to rest on the power cord or cables. Route the power cord and cables so that they cannot be stepped on or tripped over.
- ♦ Position system cables and power cables carefully; Be sure that nothing rests on any cables.
- ♦ Never push objects of any kind into or through cabinet slots. They may touch dangerous voltage points or short out parts resulting in a risk of fire or electrical shock.
- ♦ Do not attempt to service the device yourself. Refer all servicing to qualified service personnel.

- ♦ If the following conditions occur, unplug the device from the wall outlet and bring it to qualified service personnel for repair.
  - ♦ The power cord or plug has become damaged or frayed.
  - ♦ Liquid has been spilled into the device.
  - ♦ The device has been exposed to rain or water.
  - ♦ The device has been dropped, or the cabinet has been damaged.
  - ♦ The device exhibits a distinct change in performance, indicating a need for service.
  - ♦ The device does not operate normally when the operating instructions are followed.
- ♦ Only adjust those controls that are covered in the operating instructions. Improper adjustment of other controls may result in damage that will require extensive work by a qualified technician to repair.

## Technical Support

---

### International

- ♦ For online technical support – including troubleshooting, documentation, and software updates: <http://support.aten.com>
- ♦ For telephone support, see *Telephone Support*, page iv:

### North America

Email Support		<a href="mailto:support@aten-usa.com">support@aten-usa.com</a>
Online Technical Support	Troubleshooting Documentation Software Updates	<a href="http://www.aten-usa.com/support">http://www.aten-usa.com/support</a>
Telephone Support		1-888-999-ATEN ext 4988 1-949-428-1111

When you contact us, please have the following information ready beforehand:

- ♦ Product model number, serial number, and date of purchase
- ♦ Your computer configuration, including operating system, revision level, expansion cards, and software
- ♦ Any error messages displayed at the time the error occurred
- ♦ The sequence of operations that led up to the error
- ♦ Any other information you feel may be of help

## Supported List of Android Tablets

Please see the list below for supported Android tablets.

Manufacturer	Model Name
Acepad	A140
Acer	Walle
Advance	SP4702
	SP5712
AIDATA	ADT1012L
	ADT1061
Alldocube	iPlay_20
	iPlay_40
AllView	Viva H1003 LTE PRO/1
	Viva H1003 LTE PRO/3
Archos	AC101XPro4G
	Archos Oxygen 101S
Axioo	MH
BEISTA	X101
	X104
Blackview	Tab8
BLOW	PlatinumTAB10_4G
Bluebird	RT103
	ST 103
BMAX	I10_EEA
BMXC	BM108
	JR-M802
	M107
	M863-EEA
	XQ107-EEA
BQru	BQ-1025L
	BQ-8077L
BRAVE	BTSL1
BRIGMTON	BTPC-1025OC



Manufacturer	Model Name
BYJUS	LRN10
	LRNS10WIL0
Casper	L20
	VIA_L30
CHAINWAY	P80
Cherry Mobile	A840
Chosunbiz	Chosunbiz
Chuwi	HiPadPlus_EEA
	HiPadX_eea_1
	Surpad
COMPUMAX	BlueS10
Concord	A10
	Dream_Edition_C-754
Crelander	A101
Crosscall	Core-T4
Danew	Dslide_1020
Dany	Signature-S8
DEXP	H210
	Q210
Dicle_Tab	Dicle Tab MyPen P1
	Dicle Tab Ultra
	Dicle_Tab_Active
DiDi (Japan)	DDT-001
Digma	CITI_Octa_10_CS1219PL
	CS7217PL
	CS8218PL
	Optima_10_X702_4G
	Optima_7_X700_4G
	Optima_8_Z801_4G
	TS1229PL
	TS7225PL
Docomo	d-02K

Manufacturer	Model Name
DragonTouch	DragonTouch
	MAX_10_eea
	NotePad_101_B
	Note Pad_102
	T10M
ELO Touch	15in-I-Series-4-USB-C
	BackPack-4
Estar	MID1020L
Evercross	X8
	X9
EXCEED	EX10S10
	EX8S1
Fujitsu	F-02K
	Patio730
Fusion5	F105Dv2
General Mobile	e-tab 20
Geo (GeoTechVision)	GEO10
Greentel	Greentel-A10
G-Tab	N28
Haier	P20
Hihi	HIHI-41KH-TAB-1-EEA
Hisense	HITV105C
	E22
Honeywell	TA60A
	VM1A
	VM3A
Hoozo	YK_P30
Huawei	HUAWEI MediaPad M5 10.8
	HUAWEI MediaPad M5 PRO
Hyundai	10LA2
iBall	iT-KSA0012
i-Buddie	TG08RK1
iGet	SMART_L20X

Manufacturer	Model Name
Ikon	IK-1106
iMuz	G10E
	muPAD L10
Innjoo	VOOM_TAB_LTE
IRIE	FFF-TAB10H
Isafe	IS930
I-Scream	E1012T
IXTECH	IX1012
Juniper Systems	Mesa3
KONDE	KD2
Lechpol	EAGLE1069
Lenovo	LAVIE T11 112K1
	LAVIE T11 11QHD1
	Lenovo Tab K10
	Lenovo Tab P11 PRO
	Lenovo Tab M8
	Lenovo Tab P10
	Lenovo Tab P11
	Lenovo Tab M10
	Lenovo Tab6
	Lenovo Yoga Tab 11
	XiaoXi Pad
	XiaoXin Pad Pro
	Yoga Smart Tab
	Yoga Tab 13 (ROW)
LGE	G Pad 5 10.1 FHD
LitByLeia	LUME
LNMBBS	L201-EEA
	L60
	P401
	P40-EEA
Logic Instrument	Logic Instrument Fieldbook N101

Manufacturer	Model Name
LOOQS	F102-EEA
Majestic	TAB_912_4G
Masstel	Masstel
Maxtron	MAXTRON Genio
Meberry	M7
	M7Pro
Mediacom	1AZ2T
	M-SP1AZ2TW-EEA
Medion	P1071X
Microtech	etab_LTE
MiTAC	N630
	N651
Mito	MITO_T7
MLS Innovation	iQ1060M
	iQT1161
MOBULAA	Tab-1
MOXNICE	P63_EEA
Multilaser	M10_4G_PRO
NEC	LAVIE Tab E 10FHD1
	PC-TE510JAW
Nextbook	BRT81
Nexvoo	NexFone N380
NOGA	NOGAPAD101XTREME
Novinsun	TN618
ODS Corporation	TA2C-DR9
	TA2C-DR94G
ODYS	ODYS_SPACE_ONE_10
OKAPI	Okapi_Tab6
	Okapi_Tab8
Onn (Walmart)	100003562
Ordissimo	Celia
Packard Bell	SILVERSTONE-T10
Panasonic	FZ-A3

Manufacturer	Model Name
Phoenix	PHONETABPRO
PHYWE	SMARTlink
Pixus	Pixus_Joker
Polytron	T8001
Prestigio	HP10A5L
Pritom	1AZ20_eea
	L10
	M10_Air_EEA
	M10_PLUS_EEA
Prixton	Expert
Reeder	M10_Blue_Max
Remdun	RD16Q
	RD16QE
	RD86QE
Rhino	M10p_001
Rixun	T107
RuggON	MT7030
	PA501
S&T Global	8788_7
	C20

Manufacturer	Model Name
Samsung	Galaxy Tab A
	Galaxy Tab A with S Pen
	Galaxy Tab 7
	Galaxy Tab Active Pro
	Galaxy Tab Active2
	Galaxy Tab Active3
	Galaxy Tab S3
	Galaxy Tab S4
	Galaxy Tab S5e
	Galaxy Tab S6
	Galaxy Tab S6 5G
	Galaxy Tab S6 Lite
	Galaxy Tab S7
	Galaxy Tab S7+
	Galaxy Tab S7+ 5G
Selvas	H632B
Seuic	AUTOID Pad Air
Sharp	dtab d-41A
	SH-T01
Sigma Mobile	X_style_Tab_A1010
	X_style_Tab_A801
SoyMomo	SoyMomo_Pro_V2
SPC Mobile	GRAVITY_OCTACORE
	GRAVITY2-4G
Sunny	SN10064
TAG-DC	TAG-DC
TAG-TECH	TAG_TAB_II
	TAG-TAB-III
Talius	Zicron_1016_4G
TazTag	Tazpad-FAP60

Manufacturer	Model Name
TCL	TCL 10 TABMAX
	TCL 10 TABMAX 4G
	TCL TAB 10s 4G
	TCL TAB kids
Technopc	UP10SI36LA
Teclast	APEX_P10HD_PRO
	M30_Pro_ROW
	M40SE_EEA
	P10_HD_EEA
	P10_HD_ROW
	P10S_ROW
	T30_ROW
TJD (SZ)	MT-1011OF
TOSCIDO	P101
	T12-EEA
	T15
	T151-EEA
	T50-EEA
	X102
Touchmate	TM-MID1080
TPS	TPS-SC10
TTS-group	IT10268
Umax	10C_LTE
	10C-PRO-LTE
Vankyo	P31
	P31-E
	P40
	S20
	S30
Vastking	KingPad_K10
	KingPad_K10Pro
	KingPad_SA10
	KingPad_SA8

Manufacturer	Model Name
Vaxcare	VaxHub2
Veidoo	T20-Plus
Vertex	Wolverine12
VIVIMAGE	VIVIMAGE_E11
Vonino	iMart_Pro
	Magnet_G30_EEA
	Magnet_G50
	Magnet_G50_lite
VORCOM	S8Pro
	SXPRO_classic
VUCATIMES	VucaPad_N20
Wave 8	Wave_8_10
WILLKOTECH	Kishi-001
Winnovo	P20-Tab
	WinnovoT5
Wishtel	IRA-DUO
	IRA102017I
X-TIGI	Hope10_Pro
YesTeL	T5
	T5-plus
YOTOPT	Y3-EEA
YUMKEM	N10-EEA
ZAMOLXE	ZXT-10FL323G-PRO
	ZXT-10HL323S
Zebra	Customer Concierge 600
	Customer Concierge 6000
	ET51
	ET56
	Zebra Technologies L10
	Zebra Technologies VC8300
ZOOMSMART	LT800
zyrex	ZT216_23



# Specifications

Function	StreamLIVE™ PRO
<b>Video Input</b>	1 x 4K HDMI Type-A Female (up to 2160@60, no HDCP support) 3 x HDMI Type-A Female (up to 1080p @ 60, switcher, no HDCP support)
<b>Video Output</b>	1 x 4K Loop-Thru HDMI Type-A Female (up to 2160 @ 60, no HDCP support) 1 x PGM HDMI Type-A Female (up to 1080p @ 60, no HDCP support)
<b>Video Sampling</b>	4:2:2 8-bit
<b>Color Space</b>	4:2:2 YUV
<b>Video Resolution</b>	<b>Input Resolution</b> <b>HDMI 1</b> VGA: 640 x 480 @ 60, 480p: 60/50/30/25, SVGA: 800 x 600 @ 60, XGA: 1024 x 768 @ 60, 720p: 60/50/30/25, SXGA: 1280 x 1024 @ 60, WXGA+: 1440 x 900 @ 60, UXGA: 1600 x 1200 @ 60 (RB), WUXGA+: 1680 x 1050 @ 60, 1080p: 60/50/30/25, 2160p: 60/50/30/25 <b>HDMI 2/3/4</b> VGA: 640 x 480 @ 60, 480p: 60/50/30/25, SVGA: 800 x 600 @ 60, XGA: 1024 x 768 @ 60, 720p: 60/50/30/25, SXGA: 1280 x 1024 @ 60, WXGA+: 1440 x 900 @ 60, UXGA: 1600 x 1200 @ 60 (RB), 1080p: 60/50/30/25 <b>Output Resolution</b> <b>SRC/PGM HDMI</b> 480p: 60/50/30/25, 576p: 60/50/30/25, 720p: 60/50/30/25, 1080p: 60/50/30/25 <b>HDMI Loop-Through</b> VGA: 640 x 480 @ 60, 480p: 60/50/30/25, SVGA: 800 x 600 @ 60, XGA: 1024 x 768 @ 60, 720p: 60/50/30/25, SXGA: 1280 x 1024 @ 60, WXGA+: 1440 x 900 @ 60, UXGA: 1600 x 1200 @ 60 (RB), WUXGA+: 1680 x 1050 @ 60, 1080p: 60/50/30/25, 2160p: 60/50/30/25
<b>Audio Input</b>	HDMI Captured Inputs (Stereo) 2 x 1/4" TRS Jack (Dual Mono)
<b>Audio Output</b>	HDMI Outputs (Stereo) 1 x 1/8" Phone Jack (Stereo)

Function	StreamLIVE™ PRO
<b>Network Protocol</b>	<p>Dual-stream encoder supports direct live streaming to CDN server over Ethernet using Real Time Messaging Protocol (RTMP/RTMPS)</p> <p><b>Video Encoding</b></p> <p>Format: H.264</p> <p>Bit rate: 512 Kbps - 10 Mbps</p> <p>Color Format: YUV420</p> <p>Resolution: 1080p: 30/25, 720p: 60/50/30/25, 480p: 60/50/30/25</p> <p><b>Audio Encoding</b></p> <p>Format: AAC</p> <p>Sampling Rate: 48 kHz</p> <p>Bit rate: 128 kbps</p>
<b>Recording Storage</b>	<p>Max. Video Resolution: 1080p: 30/25</p> <p>File Format: MP4</p> <p>Support Media: USB 3.x compatible mobile (HDD/SSD) drive with at least 32 GB of free space</p>
<b>Connection</b>	<p>2 x USB 3.1 Gen1 Type-A Female (Blue)</p> <p>1 x USB Type-C</p> <p>1 x GbE LAN Port</p>
<b>Environmental</b>	
Operating Temperature	0 – 40 °C
Storage Temperature	–20 – 60 °C
Humidity	0–80% RH, Non-Condensing
<b>OS Support</b>	<ul style="list-style-type: none"> <li>◆ iPad Pro (3<sup>rd</sup> gen or above) with iOS 11 or later</li> <li>◆ The following iPad with iOS 11 or later (Additional Apple Lightning USB 3 Adapter is required) <ul style="list-style-type: none"> <li>• iPad Pro (1<sup>st</sup> and 2<sup>nd</sup> gen) • iPad (5<sup>th</sup> gen or above) • iPad Air (3<sup>rd</sup> gen or above) • iPad Mini (5<sup>th</sup> gen or above)</li> </ul> </li> <li>◆ Android 9 or later</li> <li>◆ Octa-Core ARM Cortex grade CPU and above</li> <li>◆ Minimum 2.75 GB system RAM</li> <li>◆ UC9040 with firmware v1.1.109 or later</li> <li>◆ Windows 10, version 17763.0 or later, 32 / 64-bit</li> </ul>
<b>Power</b>	
Maximum Input Power Rating	DC 12 V, 7.5 A

Function	StreamLIVE™ PRO
Power Consumption	DC 12 V : 17.37 W : 184 BTU
<b>Physical Properties</b>	
Housing	Metal
Weight	1.85 kg (4.07 lb)
Dimensions (L x W x H)	28.85 x 18.99 x 9.66 cm (11.36 x 7.48 x 3.8 in.)

## **Live-Streaming Information**

### **Create a Live Stream with YouTube**

You can learn more from YouTube for “Encoder Streaming”

[https://support.google.com/youtube/answer/9227510?hl=en&ref\\_topic=9257984](https://support.google.com/youtube/answer/9227510?hl=en&ref_topic=9257984)

Or from “Set up your live streaming encoder”

<https://support.google.com/youtube/answer/2907883>

### **What is CDN Service?**

A content delivery network or content distribution network (CDN) is a geographically distributed network of proxy servers and their data centers. The goal is to provide high availability and high performance by distributing the service spatially relative to end-users. CDNs serve a large portion of the Internet content today, including web objects (text, graphics and scripts), downloadable objects (media files, software, documents), applications (e-commerce, portals), live streaming media, on-demand streaming media, and social media sites.

### **RTMP/RTMPS and RTSP Protocols**

UC9020 supports RTMP/RTMPS protocol but not RTSP.

The Real-Time Messaging Protocol (RTMP) was initially a proprietary protocol for streaming audio, video and data over the Internet between a live stream client and a server. The RTMP protocol has multiple variations.

The Real Time Streaming Protocol (RTSP) is a network control protocol designed for use in entertainment and communications systems to control streaming media servers. The protocol is used for establishing and controlling media sessions between end points.

## **Other ways to input image overlays**

When your iPad is connected to the unit using direct cable link, you can upload images to the iPad directly.

You can also use, and we strongly recommend you do, Apple AirDrop and its Continuity (Enable Handoff) features to upload all necessary data from Apple related products to improve convenience.

## **Limited Warranty**

---

ATEN warrants its hardware in the country of purchase against flaws in materials and workmanship for a Warranty Period of two [2] years (warranty period may vary in certain regions/countries) commencing on the date of original purchase. This warranty period includes the [LCD panel of ATEN LCD KVM switches](#). Select products are warranted for an additional year (see [A+ Warranty](#) for further details). Cables and accessories are not covered by the Standard Warranty.

### **What is covered by the Limited Hardware Warranty**

ATEN will provide a repair service, without charge, during the Warranty Period. If a product is defective, ATEN will, at its discretion, have the option to (1) repair said product with new or repaired components, or (2) replace the entire product with an identical product or with a similar product which fulfills the same function as the defective product. Replaced products assume the warranty of the original product for the remaining period or a period of 90 days, whichever is longer. When the products or components are replaced, the replacing articles shall become customer property and the replaced articles shall become the property of ATEN.

To learn more about our warranty policies, please visit our website:  
<http://www.aten.com/global/en/legal/policies/warranty-policy/>

Released: 2022-07-21

© Copyright 2022 ATEN® International Co., Ltd.

ATEN and the ATEN logo are registered trademarks of ATEN International Co., Ltd. All rights reserved.  
All other brand names and trademarks are the registered property of their respective owners.

ATEN International Co., Ltd., 3F, No. 125, Sec. 2, Datung Rd., Sijhih District, New Taipei City 221, Taiwan  
Phone: 886-2-8692-6789 Fax: 886-2-8692-6767 TECHNICAL SUPPORT CENTER: 886-2-8692-6959